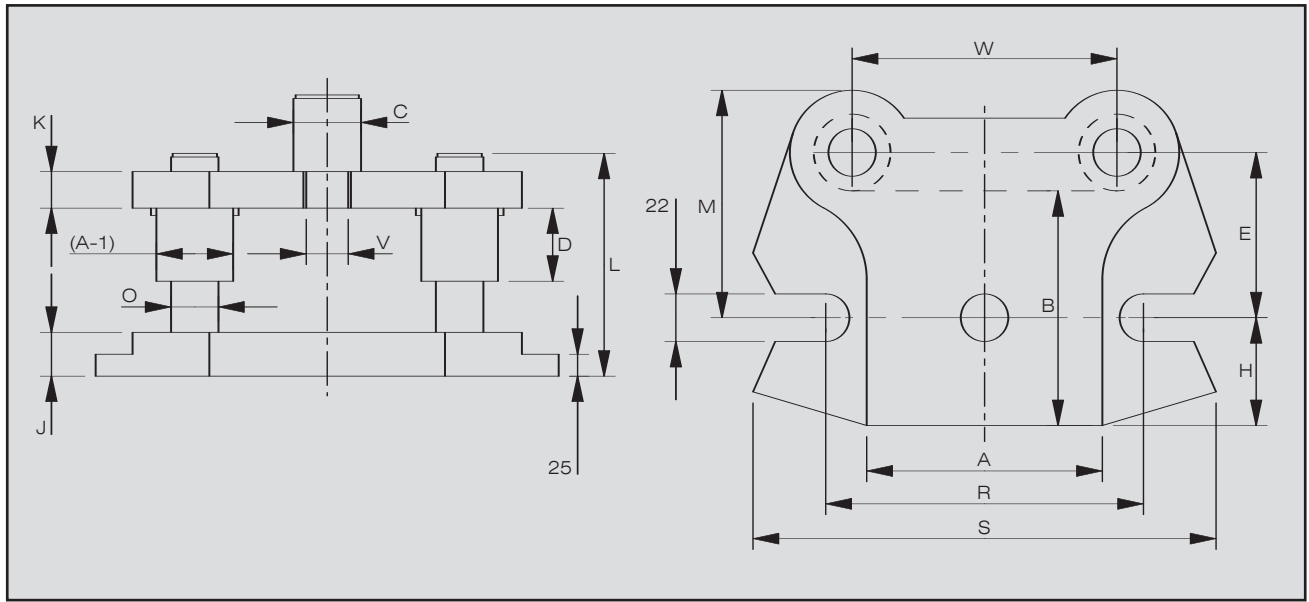


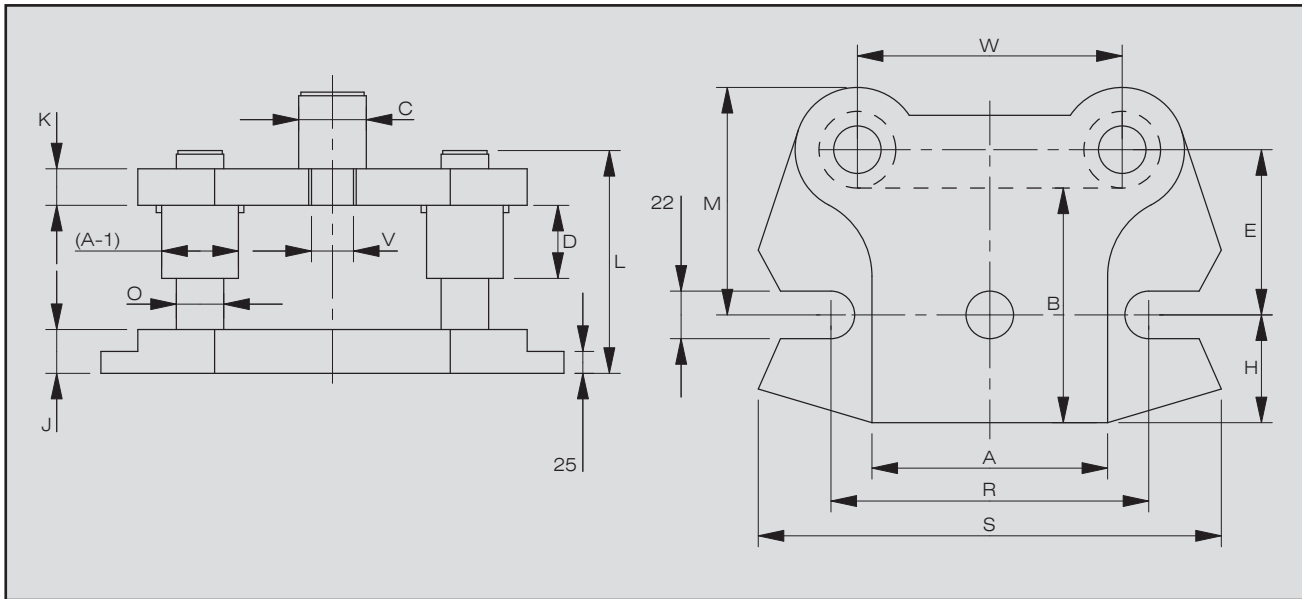
# Rear Pillar Steel Dieset



HALES CODE	DIE AREA		SHANK DIAMETER C	PIN LENGTH L	GENERAL DIMENSIONS											BSF
	A	B			W	E	H	J	K	M	O	A-1	R	S	D	
HRPS-33A	3 (76.2)	3 (76.2)	1 1 1/4	4 1/2	76.2	55.5	38.1	22.2	22.2	84.1	.7355	28.63	152.4	203	44.47	3/4
HRPS-44A	4 (101.6)	4 (101.6)	1 1/4 1 1/2	4 1/2	101.6	68.2	50.8	35	30.5	96.8	.7355	28.63	171.4	222.2	44.47	1
HRPS-55A	5 (131)	5 (126.6)	1 1/2 2	4 1/2 5 3/4	127.0	84.1	63.5	38.5	30.5	119.0	.9855	44.45	196.8	247.6	31.75 57.15	1 1/4
HRPS-64A	6 (156.4)	4 (101.2)	1 1/2 2	4 1/2 5 3/4	152.4	71.4	50.8	38.5	30.5	106.3	.9855	44.45	222.2	273.0	31.75 57.15	1 1/4
HRPS-66A	6 (156.4)	6 (152)	1 1/2 2	4 1/2 5 3/4	152.4	96.8	76.2	38.5	30.5	131.7	.9855	44.45	222.2	273.0	31.75 57.15	1 1/4
HRPS-75A	7	5	1 1/2 2	4 1/2 5 3/4	177.8	84.1	63.5	38.5	30.5	119.0	.9855	44.45	247.6	298.4	31.75 57.15	1 1/4
HRPS-75B	(181.8)	(126.6)	1 1/2 2	5 1/4 6 1/2				48.5							57.15	
HRPS-86A	8	6	1 1/2 2	4 1/2 5 3/4	203.2	96.8	76.2	38.5	30.5	131.7	.9855	44.45	273.0	323.8	31.75 57.15	1 1/4
HRPS-86B	(207.2)	(152)	1 1/2 2	5 1/4 6 1/2				48.5							57.15	
HRPS-88A	8 (207.2)	8 (202.8)	1 1/2 2	4 1/2 5 3/4	203.2	122.2	101.6	38.5	30.5	157.1	.9855	44.45	273.0	323.8	31.75 57.15	1 1/4
HRPS-95A	9	5	1 1/2 2	4 1/2 5 3/4	228.6	84.1	63.5	38.5	30.5	119.0	.9855	44.45	297.2	349.2	31.75 57.15	1 1/4
HRPS-95B	(232.6)	(126.6)	1 1/2 2	5 1/4 6 1/2				48.5							57.15	
HRPS-97A	9	7	1 1/2 2	4 1/2 5 3/4	228.6	109.5	88.9	38.5	30.5	144.4	.9855	44.45	297.2	349.2	31.75 57.15	1 1/4
HRPS-97B	(232.6)	(177.4)	1 1/2 2	5 1/4 6 1/2				48.5							57.15	
HRPS-106A	10	6	1 1/2 2	4 1/2 5 3/4	254.0	96.8	76.2	38.5	30.5	131.7	.9855	44.45	323.8	374.6	31.75 57.17	1 1/4
HRPS-106B	(258.0)	(152.0)	1 1/2 2	5 1/4 6 1/2				48.5							57.17	

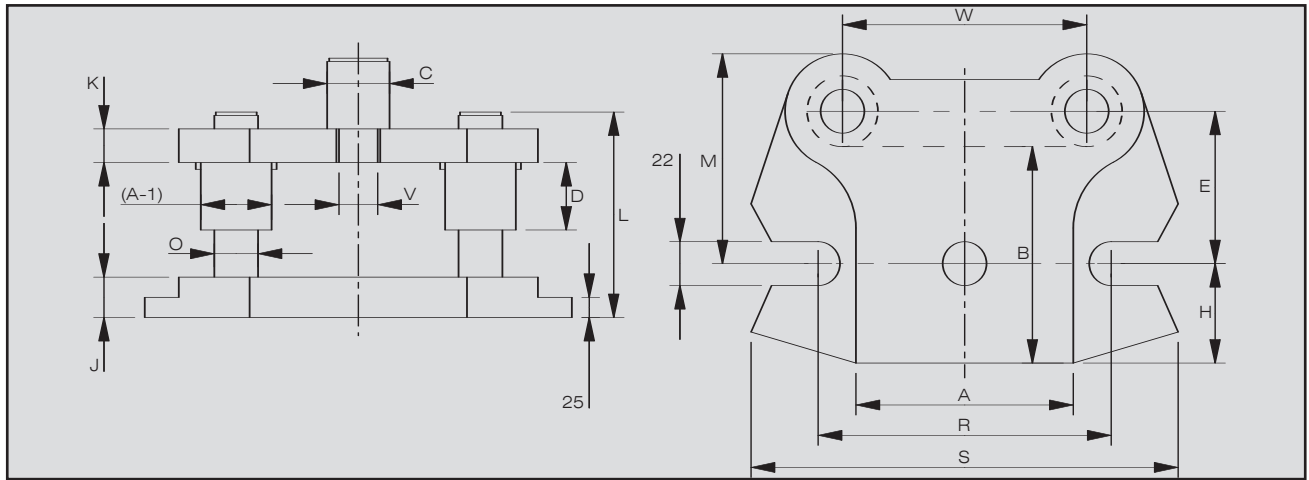
Diesets

# Rear Pillar Steel Dieset



HALES CODE	DIE AREA		SHANK DIAMETER	PIN LENGTH	GENERAL DIMENSIONS											BSF
	A	B			C	L	W	E	H	J	K	M	O	A-1	R	
HRPS-118A	11	8	1 1/2	4 1/2				38.5							38.10	
			2	5 3/4	279.4	125.4	101.6							60.33		
HRPS-118B	(283.4)	(201.2)	1 1/2	5 1/4				48.5	30.5	166.7	1235.5	53.97	349.2	400.0	60.33	1 1/4
			2	6 1/2												
HRPS-126A	12	6	2	5 3/4	304.8	100.0	76.2	38.5	30.5	141.3	1235.5	53.97	374.6	425.4	60.33	1 1/4
HRPS-126B	(308.8)	(150.4)		6 1/2				48.5								
HRPS-128A	12	8	2	5 3/4	304.8	125.4	101.6	38.5	30.5	166.7	1235.5	53.97	374.6	425.4	60.33	1 1/4
HRPS-128B	(308.8)	(201.2)		6 1/2				48.5								
HRPS-1210A	12	10	2	5 3/4	304.8	154.0	127.0	38.5	30.5	195.3	1235.5	53.97	374.6	425.4	60.33	1 1/4
HRPS-1210B	(308.8)	(255.2)		6 1/2				48.5								
HRPS-146A	14	6	2	5 3/4	355.6	100.0	76.2	38.5	30.5	141.3	1235.5	53.97	425.4	476.2	60.33	1 1/4
HRPS-146B	(359.6)	(150.4)		6 1/2				48.5								
HRPS-148A	14	8	2	5 3/4	355.6	125.4	101.6	38.5	30.5	166.7	1235.5	53.97	425.4	476.2	60.33	1 1/4
HRPS-148B	(359.6)	(201.2)		6 1/2				48.5								
HRPS-1410A	14	10	2	5 3/4	355.6	157.1	127.0	38.5	38.5	206.3	1485.5	60.00	431.8	482.6	69.85	1 1/4
HRPS-1410B	(359.6)	(253.9)		6 1/2				48.5								
HRPS-1414A	14	14	2	5 3/4	355.6	207.6	177.8	38.5	30.5	258.4	1485.5	60.00	389.2	457.2	69.85	1 1/4
HRPS-1414B	(359.6)	(355.2)		6 1/2				48.5	38.5							
HRPS-166A	16	6	2	5 3/4	406.4	100.0	76.2	38.5	38.5	141.3	1485.5	53.97	479.2	527.0	60.33	1 1/4
HRPS-166B	(410.4)	(150.4)		6 1/2				48.5								
HRPS-1612A	16	12	2	8 1/2	406.4	182.6	152.4	38.5	38.5	233.4	1485.5	60.0	440.0	508.0	69.85	1 1/4
HRPS-1612B	(410.4)	(304.8)		10				48.5	48.5							
HRPS-187A	18	7	2	8 1/2	457.2	119.1	88.9	38.5	38.5	169.9	1485.5	60.0	490.8	558.8	69.85	1 1/4
HRPS-187B	(461.2)	(177.8)		10				48.5	48.5							
HRPS-189A	18	9	2	8 1/2	457.2	144.5	144.3	38.5	38.5	195.3	1485.5	60.0	490.8	558.8	69.85	1 1/4
HRPS-189B	(461.2)	(228.6)		10				48.5	48.5							
HRPS-1814A	18	14	2	8 1/2	457.2	208.0	177.8	38.5	38.5	265.1	1485.5	60.0	502.9	571.5	69.85	1 1/4
HRPS-1814B	(461.2)	(352.4)		10				48.5	48.5	1735.5	66.68				76.18	
HRPS-1818A	18	18	2	8 1/2	457.2	263.5	228.6	38.5	38.5	320.7	1735.5	66.68	503.5	571.5	69.85	1 1/4
HRPS-1818B	(461.2)	(458.8)		10				48.5	48.5						76.18	

# Rear Pillar Steel Dieset



HALES CODE	DIE AREA		SHANK DIAMETER	PIN LENGTH	GENERAL DIMENSIONS											BSF
	A	B			C	L	W	E	H	J	K	M	O	A-1	R	
HRPS-206A	20	6	2	8 1/2	508.0	106.4	76.2	38.5	38.5	157.2	1485.5	60.0	541.6	609.6	76.18	1 1/4
HRPS-206B	(512)	(152.4)		10				48.5	48.5							
HRPS-2010A	20	10	2	8 1/2	508.0	161.9	127.0	38.5	38.5	219.1	1485.5	60.0	554.3	622.3	69.85	1 1/4
HRPS-2010B	(512)	(255.6)		10				48.5	48.5		1735.5	66.68			76.18	
HRPS-227A	22	7	2	8 1/2	558.8	123.8	89.9	38.5	38.5	181.0	1485.5	60.0	605.1	673.1	69.85	1 1/4
HRPS-227B	(562.8)	(179.4)		10				48.5	48.5		1735.5	66.68			76.18	
HRPS-2214A	22	14	2	8 1/2	558.8	212.7	177.8	38.5	38.5	269.9	1735.5	66.68	604.5	673.1	69.85	1 1/4
HRPS-2214B	(562.8)	(357.2)		10				48.5	48.5						76.18	
HRPS-246A	24	6	2	8 1/2	609.8	111.1	76.2	38.5	38.5	168.3	1485.5	60.0	655.9	723.9	69.85	1 1/4
HRPS-246B	(613.6)	(154.0)		10				48.5	48.5		1735.5	66.68			76.18	
HRPS-249A	24	9	2	8 1/2	609.8	149.2	114.3	38.5	38.5	206.4	1485.5	60.0	655.9	723.9	69.85	1 1/4
HRPS-249B	(613.6)	(230.2)		10				48.5	48.5		1735.5	66.68			76.18	
HRPS-2412A	24	12	2	8 1/2	613.6	152.4	244.5	38.5	38.5	609.6	1735.5	66.68	655.3	723.9	69.85	1 1/4
HRPS-2412B	(613.6)	(306.4)		10				48.5	48.5						76.18	
HRPS-306A	30	6	2	8 1/2	762.0	111.1	76.2	38.5	38.5	168.3	1485.5	60.0	808.3	876.3	69.85	1 1/4
HRPS-306B	(766.0)	(154.0)		10				48.5	48.5		1735.5	66.68			76.18	
HRPS-309A	30	9	2	8 1/2	762.0	149.2	114.3	38.5	38.5	206.4	1485.5	60.0	808.3	876.3	69.85	1 1/4
HRPS-309B	(766.0)	(230.2)		10				48.5	48.5		1735.5	66.68			76.18	
HRPS-366A	36	6	2	8 1/2	914.4	111.1	76.2	38.5	38.5	168.3	1485.5	60.0	960.7	1028.7	69.85	1 1/4
HRPS-366B	(918.4)	(154.0)		10				48.5	48.5		1735.5	66.68			76.18	
HRPS-369A	36	9	2	8 1/2	914.4	149.2	114.3	38.5	38.5	206.4	1485.5	60.0	960.7	1028.7	69.85	1 1/4
HRPS-369B	(918.4)	(230.2)		10				48.5	48.5		1735.5	66.68			76.18	

## REVERSE REAR PILLAR STEEL

HALES CODE	DIE AREA		SHANK DIAMETER	PIN LENGTH	GENERAL DIMENSIONS											BSF
	A	B			C	L	W	E	H	J	K	M	O	A-1	R	
HRPS-58A	5	8	2	5 3/4	142.9	122.2	101.6	38.5	30.5	157.1	985.5	44.45	212.7	263.5	57.17	1 1/4
HRPS-58B	(127.0)	(211.1)		6 1/2				48.5							57.17	
HRPS-710A	7	10	2	5 3/4	225.4	134.9	127.0	38.5	30.5	176.2	1235.5	53.97	247.6	298.4	60.33	1 1/4
HRPS-710B	(177.8)	(254)		6 1/2				48.5								
HRPS-1010A	10	10	2	5 3/4	254.0	157.2	127.0	38.5	30.5	198.3	1235.5	53.97	324.0	375.3	60.33	1 1/4
HRPS-1010B	(258.0)	(258.4)		6 1/2				48.5								
HRPS-1014A	10	14	2	5 3/4	254.0	209.5	177.8	38.5	30.5	250.7	1235.5	53.97	324.0	375.3	60.33	1 1/4
HRPS-1014B	(258.0)	(361.6)		6 1/2				48.5								