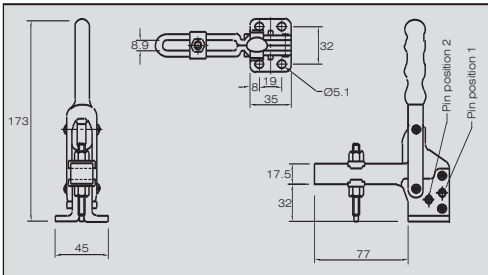
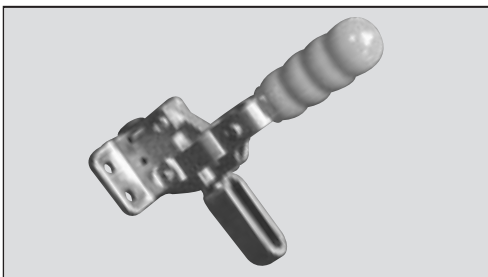
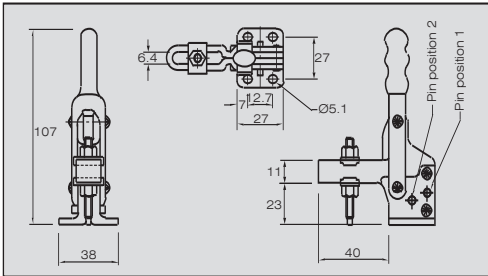
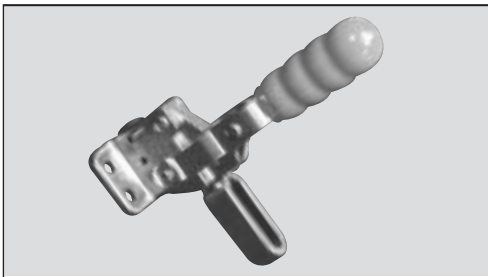
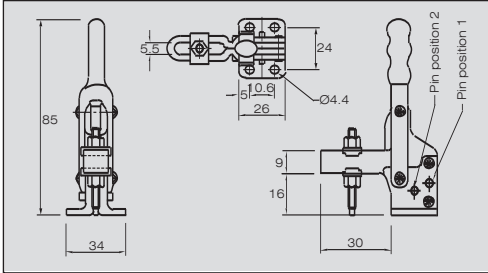
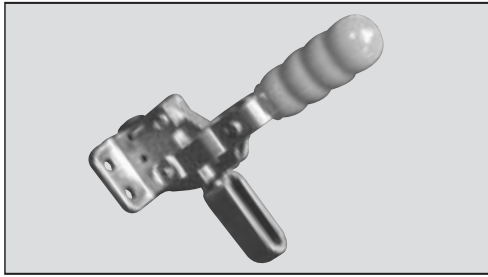


# Vertical Toggle Clamps



Part Number V75/2B	
HOLDING FORCE	150kg
WEIGHT	70g
STANDARD SPINDLE MODEL NO.	M0535
<b>ARM</b>	
OPENING ANGLE	120°
- PIN REMOVED	160°
<b>HANDLE</b>	
OPENING ANGLE	85°
- PIN REMOVED	105°

Supplied with standard spindle, nuts and flanged washers.  
For front mounting use bracket Model FM1.

Part Number V150/2B	
HOLDING FORCE	150kg
WEIGHT	170g
STANDARD SPINDLE MODEL NO.	M0650
<b>ARM</b>	
OPENING ANGLE	
- PIN POSITION 1	90°
- PIN POSITION 2	120°
- PIN REMOVED	160°
<b>HANDLE</b>	
OPENING ANGLE	
- PIN POSITION 1	70°
- PIN POSITION 2	85°
- PIN REMOVED	105°

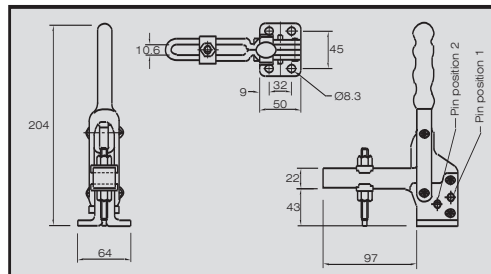
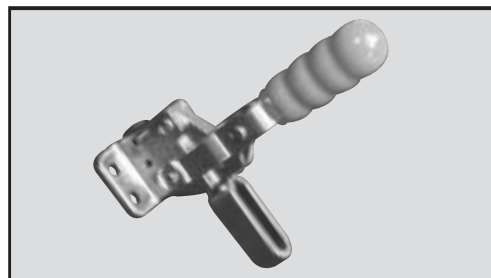
Supplied with standard spindle, nuts and flanged washers.  
For front mounting use bracket Model FM1.

Part Number V250/2B	
HOLDING FORCE	250kg
WEIGHT	380g
STANDARD SPINDLE MODEL NO.	M0865
<b>ARM</b>	
OPENING ANGLE	
- PIN POSITION 1	90°
- PIN POSITION 2	120°
- PIN REMOVED	160°
<b>HANDLE</b>	
OPENING ANGLE	
- PIN POSITION 1	70°
- PIN POSITION 2	85°
- PIN REMOVED	105°

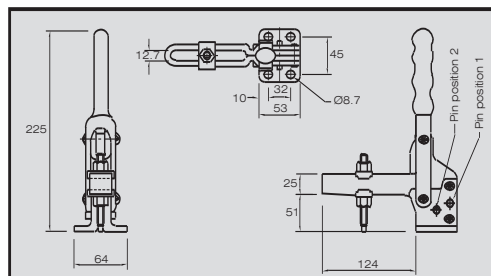
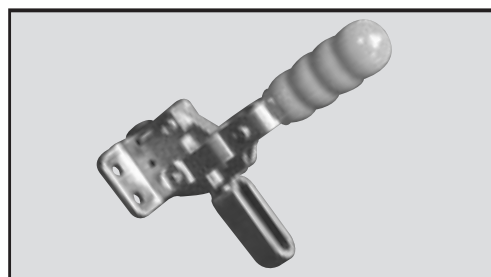
Supplied with standard spindle, nuts and flanged washers.  
For front mounting use bracket Model FM2.

# Vertical Toggle Clamps

Part Number		V350/2B
HOLDING FORCE		350kg
WEIGHT		670g
STANDARD SPINDLE MODEL NO.		M1085
<b>ARM</b>		
OPENING ANGLE		
- PIN POSITION 1		90°
- PIN POSITION 2		120°
- PIN REMOVED		160°
<b>HANDLE</b>		
OPENING ANGLE		
- PIN POSITION 1		70°
- PIN POSITION 2		85°
- PIN REMOVED		105°
Supplied with standard spindle, nuts and flanged washers. For front mounting use bracket Model FM3.		

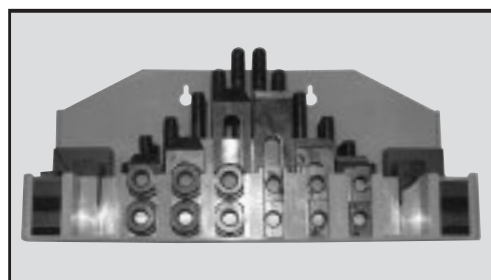


Part Number		V450/2B
HOLDING FORCE		450kg
WEIGHT		1.3kg
STANDARD SPINDLE MODEL NO.		M12100
<b>ARM</b>		
OPENING ANGLE		
- PIN POSITION 1		90°
- PIN POSITION 2		120°
- PIN REMOVED		160°
<b>HANDLE</b>		
OPENING ANGLE		
- PIN POSITION 1		70°
- PIN POSITION 2		85°
- PIN REMOVED		105°
Supplied with standard spindle, nuts and flanged washers. For front mounting use bracket Model FM3.		

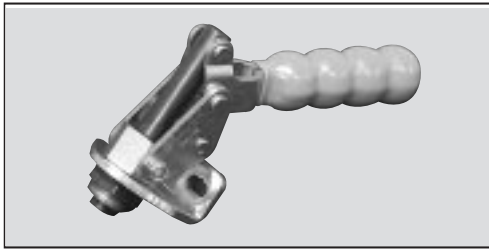


## Clamping Kits

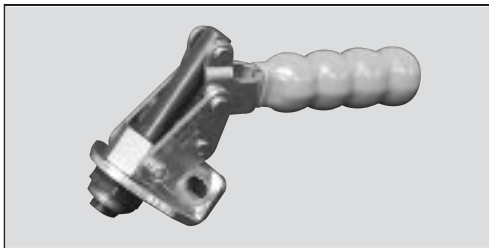
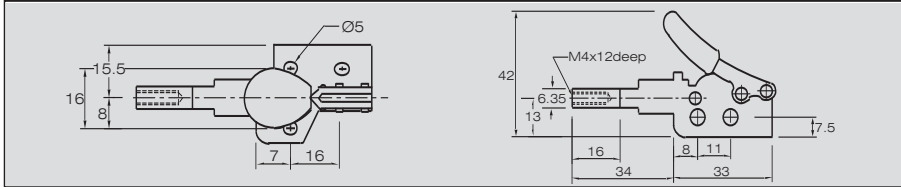
Part Number	Description
PK-104	1/2 Clamping Kit (52 pcs)
PK-105	5/8 Clamping Kit (52 pcs)
PKM12	12mm Clamping Kit (52 pcs)
PKM16	16mm Clamping Kit (52 pcs)



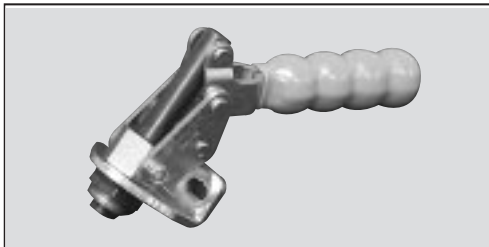
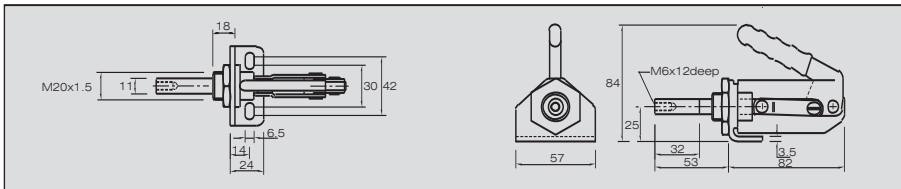
# Straight Line Clamps



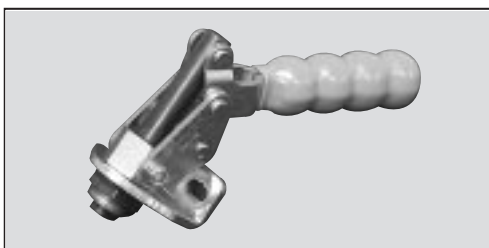
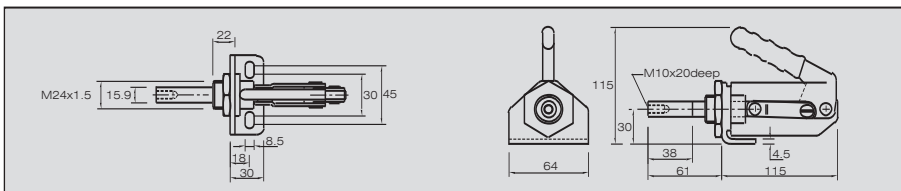
Part Number	P50
HOLDING FORCE	50kg
WEIGHT	45g
HANDLE	
OPENING ANGLE	180°



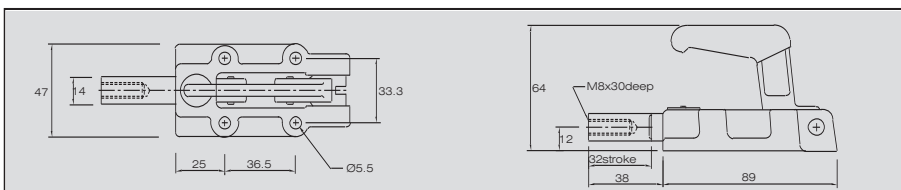
Part Number	P250
HOLDING FORCE	250kg
WEIGHT	350g
HANDLE	
OPENING ANGLE	180°



Part Number	P450
HOLDING FORCE	450kg
WEIGHT	755g
HANDLE	
OPENING ANGLE	180°

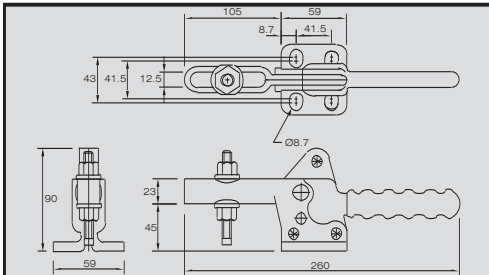
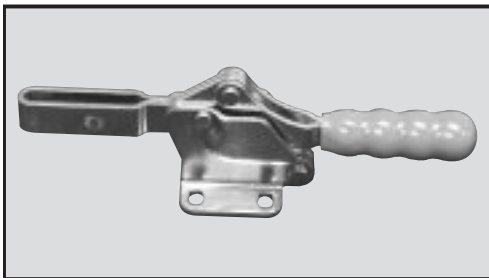
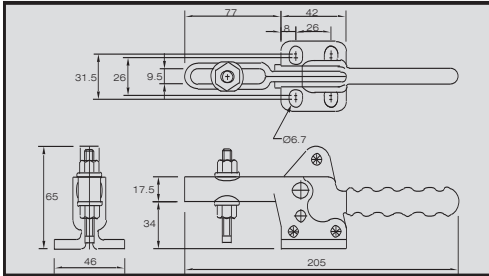
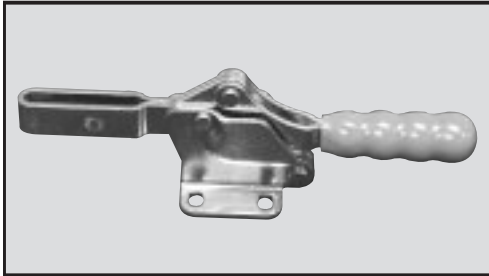
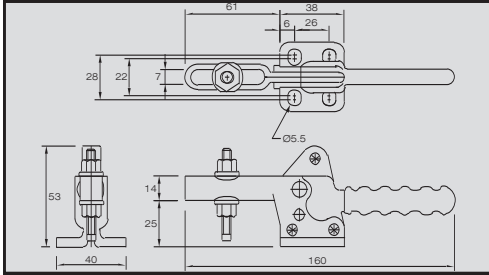
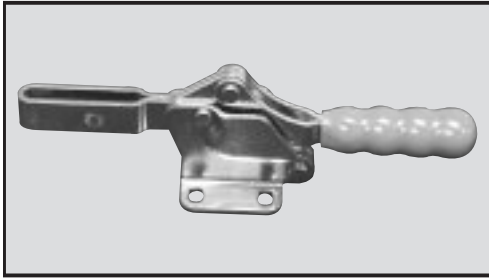


Part Number	P600
HOLDING FORCE	600kg
WEIGHT	480g
HANDLE	
OPENING ANGLE	180°





# Horizontal Toggle Clamps



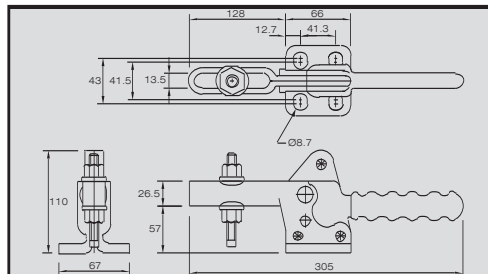
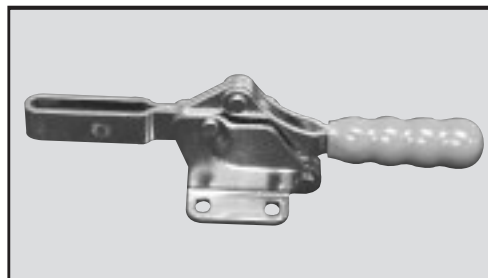
Part Number H150/2B	
HOLDING FORCE	150kg
WEIGHT	195g
STANDARD SPINDLE MODEL NO.	MO650
ARM OPENING ANGLE	94°
HANDLE	
OPENING ANGLE	74°
Supplied with standard spindle, nuts and flanged washers. For front mounting use bracket Model FM2.	

Part Number H250/2B	
HOLDING FORCE	250kg
WEIGHT	375g
STANDARD SPINDLE MODEL NO.	MO865
ARM OPENING ANGLE	92°
HANDLE	
OPENING ANGLE	70°
Supplied with standard spindle, nuts and flanged washers. For front mounting use bracket Model FM2.	

Part Number H350/2B	
HOLDING FORCE	350kg
WEIGHT	900g
STANDARD SPINDLE MODEL NO.	M1085
ARM OPENING ANGLE	91°
HANDLE	
OPENING ANGLE	68°
Supplied with standard spindle, nuts and flanged washers. For front mounting use bracket Model FM3.	

# Horizontal Toggle Clamps

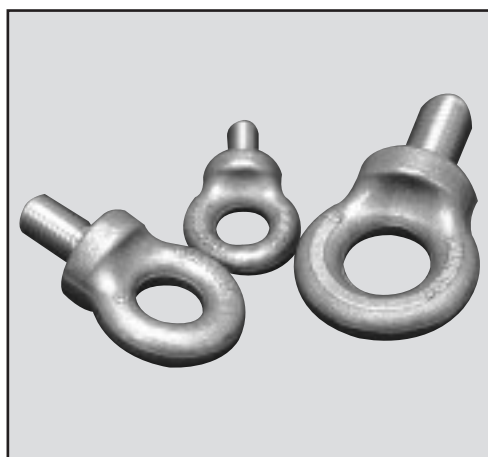
<b>Part Number</b>	<b>H450/2B</b>	
HOLDING FORCE	450kg	
WEIGHT	1.5kg	
STANDARD SPINDLE MODEL NO.	M121	
ARM OPENING ANGLE	91°	
<b>HANDLE</b>		
OPENING ANGLE	68°	
Supplied with standard spindle, nuts and flanged washers. For front mounting use bracket Model FM3.		



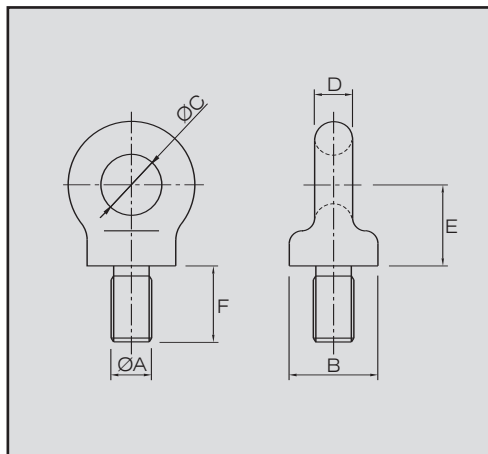
# Collard Lifting Eyebolts

Part No.	AØ	B	CØ	D	E	F
EYE10	M10	21	14	9	20	18
EYE12	M12	28	19	11	25	23
EYE16	M16	35	24	15	32	30
EYE20	M20	42	29	16	37	40
EYE22	M22	50	33	20	44	41
EYE24	M24	57	38	22	51	46
EYE30	M30	71	48	28	66	50
EYE33	M33	71	48	28	65	50
EYE38	M38	86	55	33	75	66
EYE39	M39	86	55	33	75	66
EYE42	M42	102	66	40	92	77
EYE48	M48	115	72	49	102	89
EYE56	M56	143	95	56	127	111
EYE64	M64	143	95	56	127	111
EYE76	M76	163	106	66	144	125

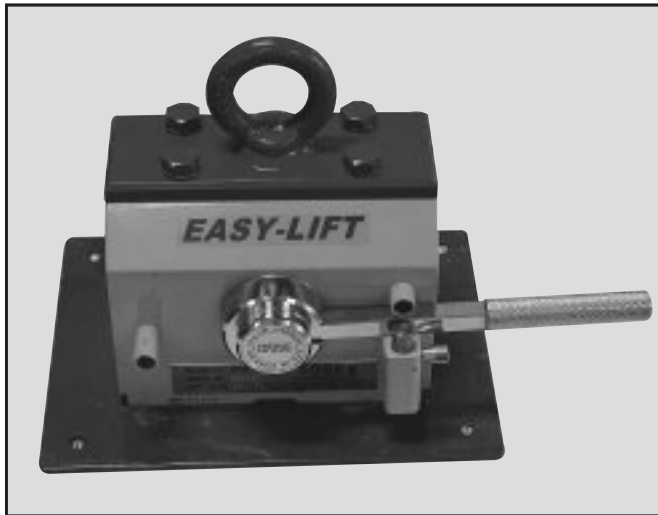
## Metric & Imperial



Part No.	AØ	B	CØ	D	E	F
EYE24	3/8"	21	14	9	20	18
EYE32	1/2"	28	19	11	25	23
EYE40	5/8"	35	24	15	32	30
EYE48	3/4"	42	29	16	37	40
EYE56	7/8"	50	33	20	44	41
EYE64	1"	57	38	22	51	46
EYE72	1 1/8"	71	48	28	66	50
EYE80	1 1/4"	71	48	28	65	50
EYE96	1 1/2"	86	55	33	75	66
EYE112	1 3/4"	86	55	33	75	66
EYE128	2"	102	66	40	92	77
EYE160	2 1/2"	115	72	49	102	89
EYE192	3"	143	95	56	127	111



# Lifting Magnet



## KPL Series / Models Specification

Permanent lifting magnets for lifting flat and / or round steel.

Part No.	Models for flat work piece				
	Dimension L x W x H (mm)	Weight (kg)	Breakaway Force (kg)		
			Flat	Round Dia (mm)	
			160	80	
KPL-10	105 x 153 x 220	10	300		
KPL-20	117 x 241 x 240	18	600		
KPL-40	189 x 241 x 270	34	1200		
KPL-60	262 x 241 x 270	51	1800		
KPL-80	334 x 241 x 288	64	2400		
KPL-100	262 x 302 x 337	80	3000		
KPL-150	289 x 353 x 379	116	4500		
KPL-200	394 x 485 x 406	161	6000		
KPL-250	472 x 485 x 406	199	7500		
KPL-300	549 x 485 x 406	242	9000		
Models for flat and round work piece					
KPL-20/15	117 x 241 x 250	20	600	450	200
KPL-45/30	122 x 355 x 357	43	1350	1000	450
KPL-60/30	262 x 241 x 270	51	1800	900	400
KPL-100/50	262 x 302 x 337	80	3000	1500	600
KPL-140/65	289 x 353 x 387	124	4300	1950	900

