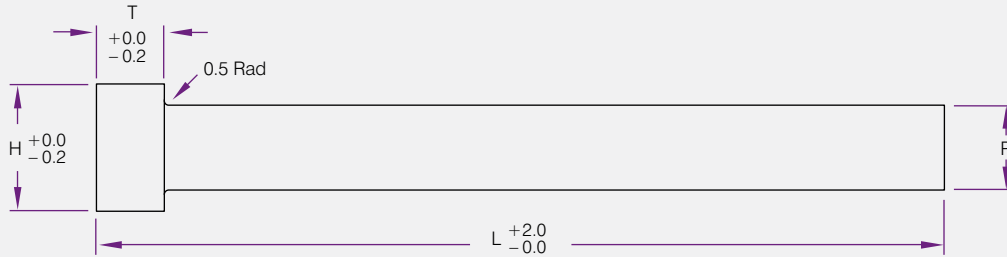


Material: H13
 Hardness:
 Core = 40-44RC
 Surface = 70-72RC

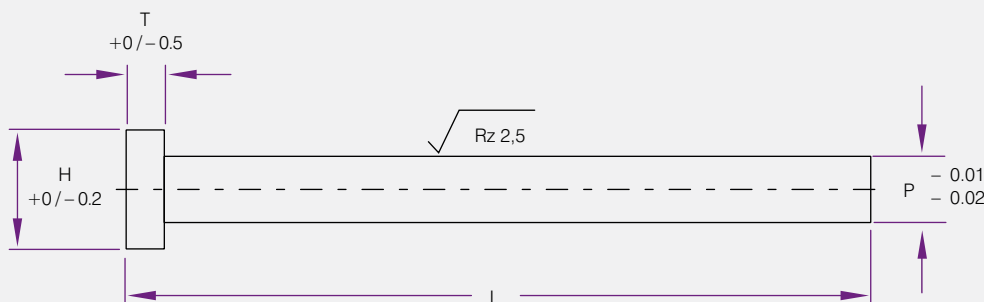
D	S	Product Code			
		L 100	L 125	L 150	L 250
1.0	10		NEJ01125-10		
1.0	12	NEJ01100-12		NEJ01150-12	
1.0	25	NEJ01100-25		NEJ01150-25	
1.0	50	NEJ01100-50		NEJ01150-50	NEJ01250-50
1.2	10		NEJ012125-10		
1.2	12				
1.2	25	NEJ012100-25		NEJ012150-25	
1.2	50			NEJ012150-50	NEJ012250-50
1.5	10		NEJ015125-10		
1.5	12	NEJ015100-12		NEJ015150-12	
1.5	25	NEJ015100-25		NEJ015150-25	
1.5	50			NEJ015150-50	NEJ015250-50
2.0	10		NEJ02125-10		
2.0	12	NEJ02100-12		NEJ02150-12	
2.0	25	NEJ02100-25		NEJ02150-25	
2.0	50			NEJ02150-50	NEJ02250-50
2.5	10		NEJ025125-10		
2.5	12	NEJ025100-12			
2.5	25	NEJ025100-25		NEJ025150-25	
2.5	50			NEJ025150-50	NEJ025250-50



Material: H13
 Hardness:
 Core = 40-45RC
 Surface = 70-72RC
 Specials to order.

P Tolerance	
1-12	-0.01 / -0.02
14-25	-0.01 / -0.03

P	H	T	Product Code											
			L 100	L 150	L 200	L 250	L 300	L 350	L 400	L 450	L 650	L 800	L 850	
1.0	6	4	NEJ01100	NEJ01150										
1.2	6			NEJ012150										
1.5	6	4	NEJ015100	NEJ015150		NEJ015250								
2.0	6	4	NEJ02100	NEJ02150		NEJ02250								
2.5	6	4	NEJ025100	NEJ025150	NEJ025200	NEJ025250								
3.0	6	4	NEJ03100	NEJ03150	NEJ03200	NEJ03250	NEJ03300	NEJ03350	NEJ03400					
3.5	7	4	NEJ035100	NEJ035150	NEJ035200	NEJ03250								
4.0	8	6	NEJ04100	NEJ04150	NEJ04200	NEJ04250	NEJ04300	NEJ04350	NEJ04400	NEJ04450				
4.5	8	6	NEJ045100	NEJ045150		NEJ045250								
5.0	9	6	NEJ05100	NEJ05150	NEJ05200	NEJ05250	NEJ05300	NEJ05350	NEJ05400	NEJ05450				
5.5	10	6		NEJ055150		NEJ055250								
6.0	10	6	NEJ06100	NEJ06150	NEJ06200	NEJ06250	NEJ06300	NEJ06350	NEJ06400	NEJ06450	NEJ06650			
6.5	10	6	NEJ065100	NEJ065150		NEJ065250	NEJ065300		NEJ065400					
7.0	11	6	NEJ07100	NEJ07150	NEJ07200	NEJ07250	NEJ07300	NEJ07350	NEJ07400	NEJ07450	NEJ07650			
7.5	13	8			NEJ075200									
8.0	13	8	NEJ08100	NEJ08150	NEJ08200	NEJ08250	NEJ08300	NEJ08350	NEJ08400	NEJ08450	NEJ08650			
8.5	14	8		NEJ085150			NEJ08300							
10.0	15	8	NEJ10100	NEJ10150	NEJ10200	NEJ10250	NEJ10300	NEJ10350	NEJ10400	NEJ10450	NEJ10650			
12.0	17	8	NEJ12100	NEJ12150	NEJ12200	NEJ12250	NEJ12300	NEJ12350	NEJ12400	NEJ12450	NEJ12650		NEJ12850	
14.0	19	8	NEJ14100	NEJ14150		NEJ14250	NEJ14300	NEJ14350	NEJ14400	NEJ14450	NEJ14650			
15.0	20	8	NEJ15100	NEJ15150		NEJ15250				NEJ15450				
16.0	21	8	NEJ16100	NEJ16150	NEJ16200	NEJ16250	NEJ16300	NEJ16350	NEJ16400	NEJ16450	NEJ16650	NEJ16800		
18.0	23	8	NEJ18100	NEJ18150		NEJ18250		NEJ18350		NEJ18450	NEJ18650			
20.0	25	8	NEJ20100	NEJ20150		NEJ20250		NEJ20350		NEJ20450	NEJ20650	NEJ20800	NEJ20850	
25.0	30	8		NEJ25150		NEJ25250		NEJ25350		NEJ25450	NEJ25650	NEJ25800		



Hardness:

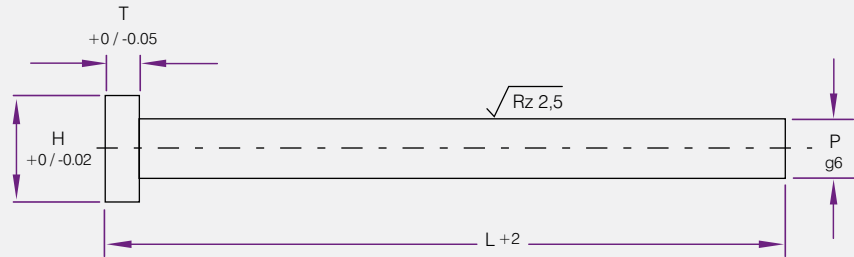
Head = HRC45+/- 5

Shaft = HRC60+/-2 Through Hardened

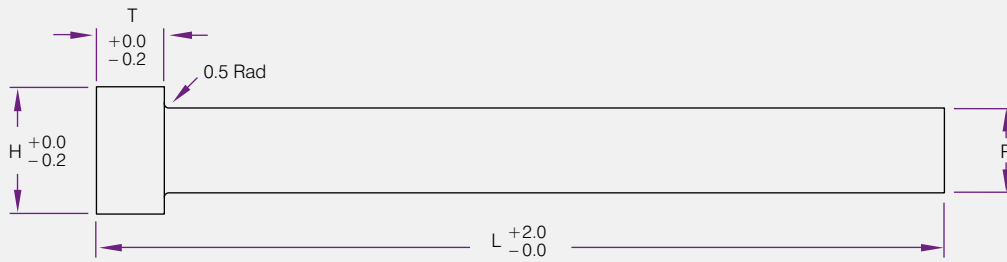
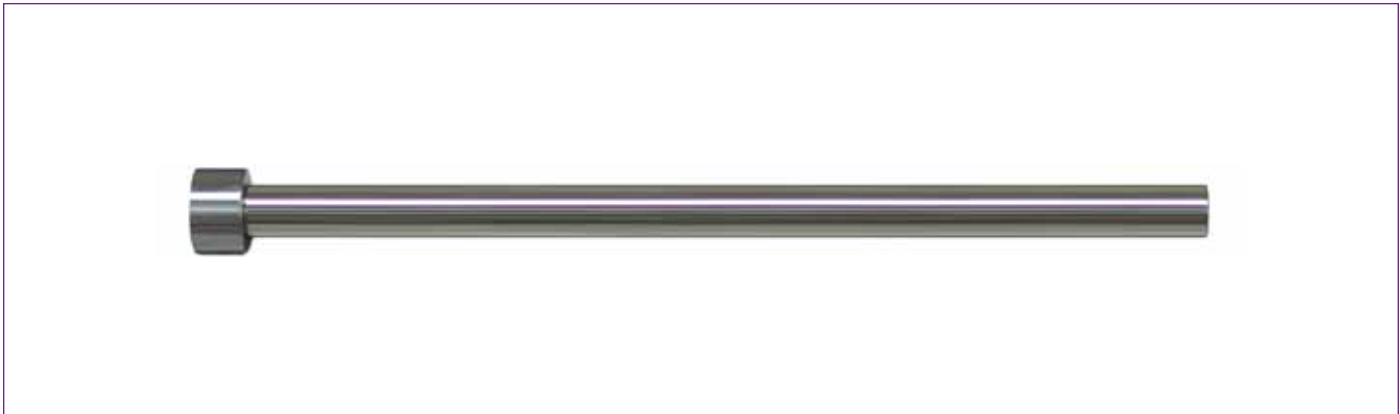
P	H	T	Product Code										
			L 100	L 150	L 200	L 250	L 300	L 350	L 400	L 500	L 600	L 700	L800
1.0	6	4	HEJ010100	HEJ010150	HEJ010200	HEJ010250	HEJ010300						
1.5	6	4	HEJ015100	HEJ015150	HEJ015200	HEJ015250	HEJ015300						
2.0	6	4	HEJ020100	HEJ020150	HEJ020200	HEJ020250	HEJ020300	HEJ020350					
2.5	6	4	HEJ025100	HEJ025150	HEJ025200	HEJ025250	HEJ025300	HEJ025350					
3.0	6	4	HEJ030100	HEJ030150	HEJ030200	HEJ030250	HEJ030300	HEJ030350					
3.5	7	4	HEJ035100	HEJ035150	HEJ035200	HEJ035250	HEJ035300	HEJ035350					
4.0	8	6	HEJ040100	HEJ040150	HEJ040200	HEJ040250	HEJ040300	HEJ040350					
4.5	9	6	HEJ045100	HEJ045150	HEJ045200	HEJ045250	HEJ045300	HEJ045350					
5.0	9	6	HEJ50100	HEJ50150	HEJ50200	HEJ50250	HEJ50300	HEJ50350	HEJ50400				
5.5	10	6	HEJ55100	HEJ55150	HEJ55200	HEJ55250	HEJ55300	HEJ55350	HEJ55400				
6.0	10	6	HEJ60100	HEJ60150	HEJ60200	HEJ60250	HEJ60300	HEJ60350	HEJ60400	HEJ60500			
6.5	11	6	HEJ65100	HEJ65150	HEJ65200	HEJ65250	HEJ65300	HEJ65350	HEJ65400	HEJ65500			
7.0	11	6	HEJ70100	HEJ70150	HEJ70200	HEJ70250	HEJ70300	HEJ70350	HEJ70400	HEJ70500			
7.5	13	8	HEJ75100	HEJ75150	HEJ75200	HEJ75250	HEJ75300	HEJ75350	HEJ75400	HEJ75500			
8.0	13	8	HEJ80100	HEJ80150	HEJ80200	HEJ80250	HEJ80300	HEJ80350	HEJ80400	HEJ80500	HEJ80600		
8.5	14	8	HEJ85100	HEJ85150	HEJ85200	HEJ85250	HEJ85300	HEJ85350	HEJ85400	HEJ85500	HEJ85600		
9.0	14	8	HEJ90100	HEJ90150	HEJ90200	HEJ90250	HEJ90300	HEJ90350	HEJ90400	HEJ90500	HEJ90600		
10.0	15	8	HEJ100100	HEJ100150	HEJ100200	HEJ100250	HEJ100300	HEJ100350	HEJ100400	HEJ100500	HEJ100600	HEJ100700	HEJ100800
12.0	17	8	HEJ120100	HEJ120150	HEJ120200	HEJ120250	HEJ120300	HEJ120350	HEJ120400	HEJ120500	HEJ120600	HEJ120700	HEJ120800
14.0	19	8	HEJ140100	HEJ140150	HEJ140200	HEJ140250	HEJ140300	HEJ140350	HEJ140400	HEJ140500	HEJ140600	HEJ140700	HEJ140800
16.0	21	8	HEJ160100	HEJ160150	HEJ160200	HEJ160250	HEJ160300	HEJ160350	HEJ160400	HEJ160500	HEJ160600	HEJ160700	HEJ160800
20.0	25	8	HEJ200100	HEJ200150	HEJ200200	HEJ200250	HEJ200300	HEJ200350	HEJ200400	HEJ200500	HEJ200600	HEJ200700	HEJ200800
25.0	30	8	HEJ250100	HEJ250150	HEJ250200	HEJ250250	HEJ250300	HEJ250350	HEJ250400	HEJ250500	HEJ250600	HEJ250700	HEJ250800



Standard: DIN1530-AH / ISO6751
 Material: 1.2067 Hardened Steel
 Hardness:
 Head = HRC45+/-5
 Core = HRC60+/-2 Through Hardened

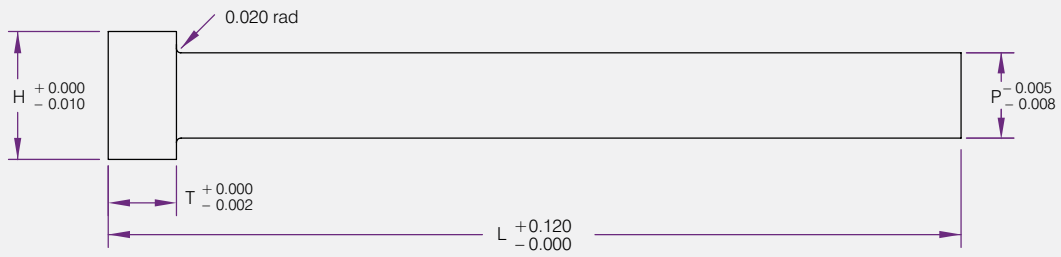


P	H	T	Product Code								
			L 100	L 125	L 160	L 200	L 250	L 315	L 400	L 500	L 630
1.5	3	1.5	HED15100	HED15125	HED15160	HED15200	HED15250				
2.0	4	2	HED2100	HED2125	HED2160	HED2200	HED2250	HED2315			
2.2	4	2	HED22100	HED22125	HED22160	HED22200	HED22250	HED22315			
2.5	5	2	HED25100	HED25125	HED25160	HED25200	HED25250	HED25315			
2.7	5	2	HED27100	HED27125	HED27160	HED27200	HED27250	HED27315			
3.0	6	3	HED3100	HED3125	HED3160	HED3200	HED3250	HED3315	HED3400		
3.2	6	3	HED32100	HED32125	HED32160	HED32200	HED32250	HED32315	HED32400		
3.5	7	3	HED35100	HED35125	HED35160	HED35200	HED35250	HED35315	HED35400		
3.7	7	3	HED37100	HED37125	HED37160	HED37200	HED37250	HED37315	HED37400		
4.0	8	3	HED4100	HED4125	HED4160	HED4200	HED4250	HED4315	HED4400	HED4500	
4.2	8	3	HED42100	HED42125	HED42160	HED42200	HED42250	HED42 315	HED42400	HED42500	
4.5	8	3	HED45100	HED45125	HED45160	HED45200	HED45250	HED45315	HED45400	HED45500	
5.0	10	3	HED5100	HED5125	HED5160	HED5200	HED5250	HED5315	HED5400	HED5500	
5.2	10	3	HED52100	HED52125	HED52160	HED52200	HED52250	HED52315	HED52400	HED52500	
5.5	10	3	HED55100	HED55125	HED55160	HED55200	HED55250	HED55315	HED55400	HED55500	
6.0	12	5	HED6100	HED6125	HED6160	HED6200	HED6250	HED6315	HED6400	HED6500	HED6630
6.2	12	5	HED62100	HED62125	HED62160	HED62200	HED62250	HED62315	HED62400	HED62500	HED62630
6.5	12	5	HED65100	HED65125	HED65160	HED65200	HED65250	HED65315	HED65400	HED65500	HED65630
7.0	12	5	HED7100	HED7125	HED7160	HED7200	HED7250	HED7315	HED7400	HED7500	HED7630
7.5	12	5	HED75100	HED75125	HED75160	HED75200	HED75250	HED75315	HED75400	HED75500	HED75630
8.0	14	5	HED8100	HED8125	HED8160	HED8200	HED8250	HED8315	HED8400	HED8500	HED8630
8.2	14	5	HED82100	HED82125	HED82160	HED82200	HED82250	HED82315	HED82400	HED82500	HED82630
8.5	14	5	HED85100	HED85125	HED85160	HED85200	HED85250	HED85315	HED85400	HED85500	HED85630
9.0	14	5	HED9100	HED9125	HED9160	HED9200	HED9250	HED9315	HED9400	HED9500	HED9630
10.0	16	5	HED10100	HED10125	HED10160	HED10200	HED10250	HED10315	HED10400	HED10500	HED10630
10.2	16	5	HED102100	HED102125	HED102160	HED102200	HED102250	HED102315	HED102400	HED102500	HED102630
10.5	16	5	HED105100	HED105125	HED105160	HED105200	HED105250	HED105315	HED105400	HED105500	HED105630
11.0	16	5	HED11100	HED11125	HED11160	HED11200	HED11250	HED11315	HED11400	HED11500	HED11630
12.0	20	7	HED12100	HED12125	HED12160	HED12200	HED12250	HED12315	HED12400	HED12500	HED12630
12.2	20	7	HED122100	HED122125	HED122160	HED122200	HED122250	HED122315	HED122400	HED122500	HED122630
12.5	20	7	HED125100	HED125125	HED125160	HED125200	HED125250	HED125315	HED125400	HED125500	HED125630
14.0	22	7	HED14100	HED14125	HED14160	HED14200	HED14250	HED14315	HED14400	HED14500	HED14630
16.0	22	7	HED16100	HED16125	HED16160	HED16200	HED16250	HED16315	HED16400	HED16500	HED16630
18.0	24	7	HED18100	HED18125	HED18160	HED18200	HED18250	HED18315	HED18400	HED18500	HED18630
20.0	26	8	HED20100	HED20125	HED20160	HED20200	HED20250	HED20315	HED20400	HED20500	HED20630
25.0	32	10			HED25160	HED25200	HED25250	HED25315	HED25400	HED25500	HED25630
32.0	40	10			HED32160	HED32200	HED32250	HED32315	HED32400	HED32500	HED32630



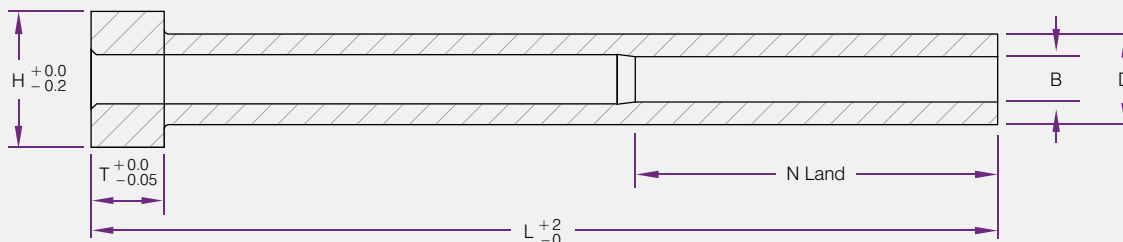
Material: H13
 Hardness:
 Core = 40-45RC
 Surface = 70-72RC

P	H	T	Product Code	
			L 150	L 250
2.1	6	4	NEJ021150	
3.1	7	4		NEJ031250
4.1	7	6	NEJ041150	NEJ041250
5.1	8	6		NEJ051250
6.1	10	6		NEJ061250
8.1	13	8		NEJ081250
10.1	15	8		NEJ101250



Material: H13
 Hardness:
 Core = 40-45RC

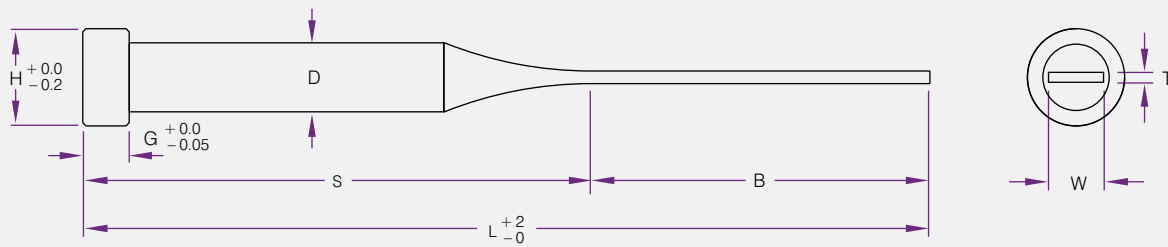
P	H	T	Product Code	
			150	250
3	6	4	SEJ03150	SEJ03250
4	7	6	SEJ04150	SEJ04250
5	9	6	SEJ05150	SEJ05250
6	10	6	SEJ06150	SEJ06250
7	11	6	SEJ07150	SEJ07250
8	13	8	SEJ08150	SEJ08250
10	15	8	SEJ10150	SEJ10250
12	17	8	SEJ12150	SEJ12250
14	19	8		SEJ14250
15	20	8	SEJ15150	SEJ15250
16	21	8		SEJ16250
18	23	8		SEJ18250
20	25	8		SEJ20250



Material: H13
 Hardness:
 ID = 40RC
 Surface = 70RC
 Specials to order.

Tolerances			
ID 1.5-3mm	-0 +0.010	OD 4-5mm	-0.010 -0.020
ID 3.5-5mm	+0 +0.012	OD 6-8mm	-0.015 -0.025
ID 5.5-10mm	+0 +0.015	OD 10-15mm	-0.020 -0.030

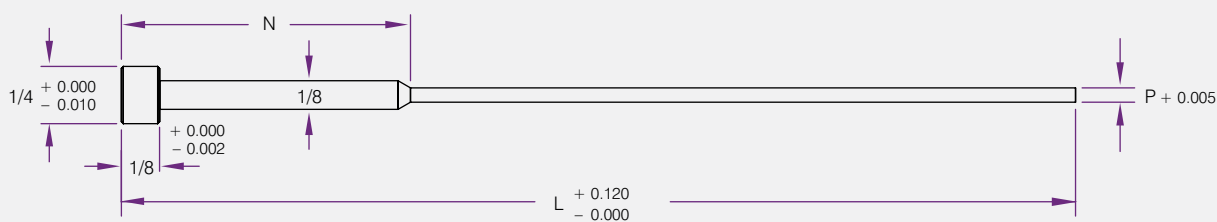
B ID	D OD	H	T	Product Code										
				L 100	L 125	L 150	L 175	L 200	L 225	L 250	L 275	L 300		
				N=40		N=50		N=60		N=70				
2.0	4	8	6	MS204100	MS204125	MS204150								
2.0	5	9	6	MS205100	MS205125	MS205150	MS205175	MS205200						
2.0	6	10	6	MS206100	MS206125	MS206150	MS206175	MS206200						
2.5	5	9	6	MS2505100	MS2505125	MS2505150	MS2505175	MS2505200	MS2505225					
2.5	6	10	6	MS2506100	MS2506125	MS2506150	MS2506175	MS2506200	MS2506225	MS2506250				
3.0	5	9	6	MS305100	MS305125	MS305150	MS305175	MS305200						
3.0	6	10	6	MS306100	MS306125	MS306150	MS306175	MS306200						
3.0	7	11	6	MS307100	MS307125	MS307150	MS307175	MS307200	MS307225	MS307250				
3.5	6	10	6	MS3506100	MS3506125	MS3506150	MS3506175	MS3506200	MS3506225	MS3506250				
3.5	7	11	6	MS3507100	MS3507125	MS3507150	MS3507175	MS3507200	MS3507225	MS3507250				
4.0	6	10	6	MS406100	MS406125	MS406150	MS406175	MS406200						
4.0	7	11	6	MS407100	MS407125	MS407150	MS407175	MS407200	MS407225	MS407250	MS407275	MS407300		
4.0	8	13	8	MS408100	MS408125	MS408150	MS408175	MS408200	MS408225	MS408250	MS408275	MS408300		
4.5	7	11	6	MS4507100	MS4507125	MS4507150	MS4507175	MS4507200	MS4507225	MS4507250				
4.5	8	13	8	MS4508100	MS4508125	MS4508150	MS4508175	MS4508200	MS4508225	MS4508250				
5.0	8	13	8	MS508100	MS508125	MS508150	MS508175	MS508200	MS508225	MS508250	MS508275	MS508300		
5.0	10	15	8	MS510100	MS510125	MS510150	MS510175	MS510200						
5.5	8	13	8	MS5508100	MS5508125									
6.0	10	15	8	MS610100	MS610125	MS610150	MS610175	MS610200	MS610225	MS610250	MS610275	MS610300		
6.5	10	15	8	MS6510100	MS6510125	MS6510150	MS6510175	MS6510200	MS6510225	MS6510250				
6.5	12	17	8	MS6512100		MS6512150		MS6512200		MS6512250				
8.0	12	17	8	MS812100	MS812125	MS812150	MS812175	MS812200	MS812225	MS812250			MS812300	
10	15	20	8	MS1015100	MS1015125	MS1015150		MS1015200		MS1015250				



Material: SK HSI Nitrided

Product Code	T	W	D	L	S	B	G	H
MEB14100	1	4	5	100	40	60	6	9
MEB14125	1	4	5	125	50	75	6	9
MEB14150	1	4	5	150	60	90	6	9
MEB14175	1	4	5	175	70	105	6	9
MEB14200	1	4	5	200	80	120	6	9
MEB125125	1.2	5	6	125	50	75	6	10
MEB125150	1.2	5	6	150	60	90	6	10
MEB125175	1.2	5	6	175	70	105	6	10
MEB125200	1.2	5	6	200	80	120	6	10
MEB126125	1.2	6	7	125	50	75	6	11
MEB126150	1.2	6	7	150	60	90	6	11
MEB126175	1.2	6	7	175	70	105	6	11
MEB126200	1.2	6	7	200	80	120	6	11
MEB128125	1.2	8	10	125	50	75	8	15
MEB128150	1.2	8	10	150	60	90	8	15
MEB128175	1.2	8	10	175	70	105	8	15
MEB128200	1.2	8	10	200	80	120	8	15
MEB155125	1.5	5	6	125	50	75	6	10
MEB155150	1.5	5	6	150	60	90	6	10
MEB155175	1.5	5	6	175	70	105	6	10
MEB155200	1.5	5	6	200	80	170	6	10
MEB156125	1.5	6	7	125	50	75	6	11
MEB156150	1.5	6	7	150	60	90	6	11
MEB156175	1.5	6	7	175	70	105	6	11

Product Code	T	W	D	L	S	B	G	H
MEB156200	1.5	6	7	200	80	120	6	11
MEB158125	1.5	8	10	125	50	75	8	15
MEB158150	1.5	8	10	150	60	90	8	15
MEB158175	1.5	8	10	175	70	105	8	15
MEB158200	1.5	8	10	200	80	120	8	15
MEB26100	2	6	7	100	40	60	6	11
MEB26125	2	6	7	125	50	75	6	11
MEB26150	2	6	7	150	60	90	6	11
MEB26200	2	6	7	200	80	120	6	11
MEB28100	2	8	10	100	40	60	8	15
MEB28125	2	8	10	125	50	75	8	15
MEB28150	2	8	10	150	60	90	8	15
MEB28175	2	8	10	175	70	105	8	15
MEB28200	2	8	10	200	80	120	8	15
MEB210125	2	10	12	125	50	75	8	17
MEB210150	2	10	12	150	60	90	8	17
MEB210175	2	10	12	175	70	105	8	17
MEB210200	2	10	12	200	80	120	8	17



Material: H13
 Hardness:
 Core = 40-45RC
 Surface = 70-72RC

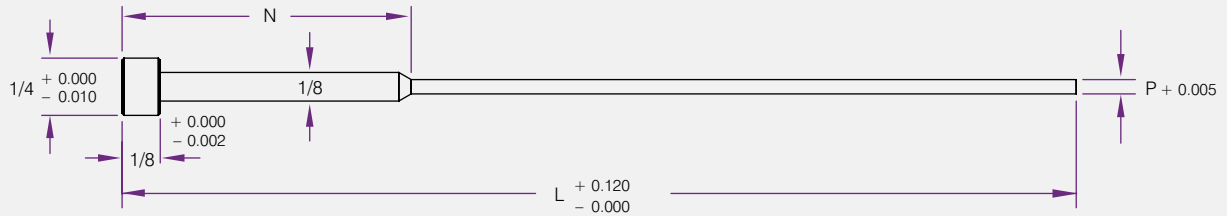
P	N	Product Code	
		L 6"	L 10"
3/64	1/2	E0306 -1/2	E0310 -1/2
1/16	1/2	E0406 -1/2	E0310 -1/2
5/64	1/2	E0506 -1/2	E0310 -1/2
3/32	1/2	E0606 -1/2	E0310 -1/2
7/64	1/2	E0706 -1/2	E0310 -1/2
3/64	1	E0306 -1	
1/16	1	E0406 -1	
5/64	1	E0506 -1	
3/32	1	E0606 -1	
7/64	1	E0706 -1	
3/64	2	E0306 -2	E0310 -2
1/16	2	E0406 -2	E0410 -2
5/64	2	E0506 -2	E0510 -2
3/32	2	E0606 -2	E0610 -2
7/64	2	E0706 -2	E0710 -2



Material: H13
 Hardness:
 Core = 40-45RC
 Surface = 70-72RC

P Tolerance			
3/64-23/64	-.0003 -.0008	3/8-1"	+.000 -.001

P	H	T	Product Code				
			L 6"	L 10"	L 14"	L 18"	L 25"
3/64	1/4	1/8	EO306				
1/16	1/4	1/8	EO406				
5/64	1/4	1/8	EO506				
3/32	1/4	1/8	EO606	EO610			
7/64	1/4	1/8	EO706	EO710			
1/8	1/4	1/8	EO806	EO810	EO814		
9/64	1/4	1/8		EO910	EO914		
5/32	9/32	5/32	E1006	E1010	E1014	E1018	
11/64	11/32	3/16		E1110	E1114		
3/16	3/8	3/16	E1206	E1210	E1214	E1218	E1225
13/64	3/8	3/16		E1310			
7/32	13/32	3/16		E1410	E1414		
1/4	7/16	3/16	E1606	E1610	E1614	E1618	E1625
17/64	7/16	1/4		E1710	E1714		E1725
9/32	7/16	1/4	E1806	E1810	E1814	E1818	E1825
19/64	1/2	1/4		E1910	E1914		
5/16	1/2	1/4	E2006	E2010	E2014	E2018	E2025
21/64	9/16	1/4		E2110	E2114		
11/32	9/16	1/4	E2206	E2210	E2214		E2225
23/64	5/8	1/4		E2310	E2314		
3/8	5/8	1/4	E2406	E2410	E2414	E2418	E2425
13/32	11/16	1/4	E2606	E2610	E2614	E2618	E2625
7/16	11/16	1/4	E2706	E2710	E2714	E2718	E2725
15/32	3/4	1/4		E3010	E3014	E3018	
1/2	3/4	1/4	E3206	E3210	E3214	E3218	E3225
9/16	13/16	1/4	E3606	E3610	E3614	E3618	
5/8	7/8	1/4	E4006	E4010	E4014	E4018	E4025
11/16	15/16	1/4		E4210			
3/4	1"	1/4	E4806	E4810	E4814	E4818	E4825
7/8	1 1/18"	1/4	E5606	E5610	E5614	E5618	
1"	1 1/14"	1/4	E6406	E6410	E6414	E6418	E6425



Material: H13
 Hardness:
 Core = 40-45RC
 Surface = 70-72RC

Product Code	P	N	L=10
EO310-1/2OS	3/64	1/2	◆
EO310-2OS	3/64	2	◆
EO510-1/2OS	5/64	1/2	◆
EO510-2OS	5/64	2	◆
EO610-1/2OS	3/32	1/2	◆
EO610-2OS	3/32	2	◆
EO710-2OS	7/64	2	◆

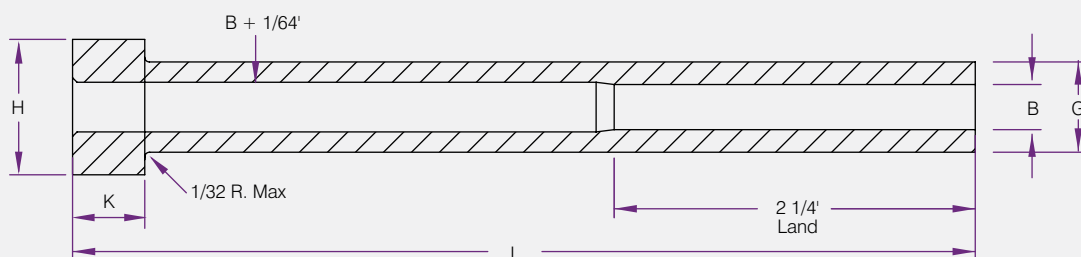


Product Code	P	H	T	L=10
EO810-OS	1/8	1/4	1/8	◆
E1010-OS	5/32	9/32	5/32	◆
E1210-OS	3/16	3/8	3/16	◆
E1610-OS	1/4	7/16	3/16	◆
E2010-OS	5/16	1/2	1/4	◆
EO810-OS	1/8	5/8	1/4	◆
E2810-OS	7/16	11/16	1/4	◆
E3210-OS	1/2	3/4	1/4	◆



Material: H13
 Hardness: 40-45RC

P	H	T	Product Code		
			6"	10"	14"
1/8	1/4	1/8	ES0406	ES0410	
5/32	9/32	5/32	ES0506	ES0510	
3/16	3/8	3/16		ES1210	
7/32	13/32	3/16		ES1410	
1/4	7/16	3/16		ES1610	
9/32	7/16	1/4		ES1810	
5/16	1/2	1/4		ES2010	
3/8	5/8	1/4	ES2406	ES2410	ES2414
7/16	11/16	1/4	ES2806	ES2810	ES2814
1/2	3/4	1/4	ES3206	ES3210	ES3214
5/8	7/8	1/4	ES4006	ES4010	
3/4	1	1/4	ES4806	ES4810	



Material: H13
 Hardness:
 Core = 40-45RC
 Surface = 70-72RC
 IS06 and IS08 have a 1 3/4 land.

Tolerances	
Head Diameter (H)	-.000 +.010
Head Thickness (K)	-.000 +.002
Sleeve Diameter (G)	-.000 +.001
Sleeve ID (B)	+.0005 -.0000
Length (L)	+.12 -.00

B ID	G OD	H O	K Head Thickness	Product Code										
				L 3"	L 4"	5"	6"	7"	8"	9"	10"	11"	12"	
3/32	3/16	3/8	3/16	IS0603	IS0604	IS0605	IS0606	IS0607						
1/8	7/32	13/32	3/16	IS0803	IS0804	IS0805	IS0806	IS0807						
5/32	1/4	7/16	3/16		IS1004	IS1005	IS1006	IS1007	IS1008	IS1009	IS1010			
3/16	5/16	1/2	1/4		IS1204	IS1205	IS1206	IS1207	IS1208	IS1209	IS1210	IS1211	IS1212	
7/32	11/32	9/16	1/4		IS1404	IS1405	IS1406	IS1407	IS1408	IS1409	IS1410			
1/4	3/8	5/8	1/4	IS1603	IS1604	IS1605	IS1606	IS1607	IS1608	IS1609	IS1610	IS1611	IS1612	
5/16	7/16	11/16	1/4		IS2004	IS2005	IS2006	IS2007	IS2008	IS2009	IS2010	IS2011	IS2012	
3/8	1/2	3/4	1/4		IS2404	IS2405	IS2406	IS2407	IS2408	IS2409	IS2410	IS2411	IS2412	
7/16	5/8	7/8	1/4		IS2804	IS2805	IS2806	IS2807	IS2808	IS2809	IS2810	IS2811	IS2812	
1/2	11/16	15/16	1/4		IS3204	IS3205	IS3206	IS3207	IS3208	IS3209	IS3210	IS3211	IS3212	
9/16	3/4	1"	1/4		IS3604	IS3605	IS3606	IS3607	IS3608	IS3609	IS3610	IS3611	IS3612	
5/8	7/8	1 1/8	1/4		IS4004	IS4005	IS4006	IS4007	IS4008	IS4009	IS4010	IS4011	IS4012	
3/4	1"	1 1/4	1/4		IS4804	IS4805	IS4806	IS4807	IS4808	IS4809	IS4810	IS4811	IS4812	