

Unbrako fasteners are the strongest off the shelf threaded fasteners you can buy. When purchasing Unbrako socket screws, you can be sure that they meet or exceed the strength levels of all current standards including ANSI, ISO and DIN to name a few.

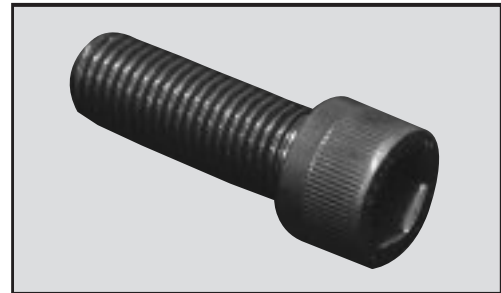
Why Unbrako?

Reliability, high pressure, stresses and speeds in today's machines and equipment demands stronger more reliable fasteners, as the rising cost of down time is intolerable.,

Socket Head Cap Screws (Metric)

Suitable for all high tensile applications.
Use alloy for tensiles up to 1300Mpa

Sizes M18, M42 and zinc coated are also available



Length	M3	M4	M5	M6	M8	M10	M12	M14	M16	M20	M24	M27	M30	M36
5	◆	◆	◆											
6	◆	◆	◆											
8	◆	◆	◆	◆										
10	◆	◆	◆	◆	◆	◆								
12	◆	◆	◆	◆	◆	◆	◆							
16	◆	◆	◆	◆	◆	◆	◆							
20	◆	◆	◆	◆	◆	◆	◆		◆					
25	◆	◆	◆	◆	◆	◆	◆	◆	◆					
30	◆	◆	◆	◆	◆	◆	◆	◆	◆	◆				
35	◆	◆	◆	◆	◆	◆	◆	◆	◆	◆				
40	◆	◆	◆	◆	◆	◆	◆	◆	◆	◆	◆			
45	◆	◆	◆	◆	◆	◆	◆	◆	◆	◆	◆	◆		
50	◆	◆	◆	◆	◆	◆	◆	◆	◆	◆	◆	◆	◆	
55	◆	◆	◆	◆	◆	◆	◆	◆	◆	◆	◆	◆	◆	
60	◆	◆	◆	◆	◆	◆	◆	◆	◆	◆	◆	◆	◆	◆
65		◆	◆	◆	◆	◆	◆	◆	◆	◆	◆	◆	◆	
70	◆	◆	◆	◆	◆	◆	◆	◆	◆	◆	◆	◆	◆	◆
75		◆	◆	◆	◆	◆	◆	◆	◆	◆	◆	◆	◆	◆
80	◆	◆	◆	◆	◆	◆	◆	◆	◆	◆	◆	◆	◆	◆
90		◆	◆	◆	◆	◆	◆	◆	◆	◆	◆	◆	◆	◆
100		◆	◆	◆	◆	◆	◆	◆	◆	◆	◆	◆	◆	◆
110			◆	◆	◆	◆	◆	◆	◆	◆	◆	◆	◆	◆
120		◆	◆	◆	◆	◆	◆	◆	◆	◆	◆	◆	◆	◆
130			◆	◆	◆	◆	◆	◆	◆	◆	◆	◆	◆	◆
140			◆	◆	◆	◆	◆	◆	◆	◆	◆	◆	◆	◆
150			◆	◆	◆	◆	◆	◆	◆	◆	◆	◆	◆	◆
160			◆	◆	◆	◆	◆	◆	◆	◆	◆	◆	◆	◆
170			◆	◆	◆	◆	◆	◆	◆	◆	◆	◆	◆	◆
180			◆	◆	◆	◆	◆	◆	◆	◆	◆	◆	◆	◆
190			◆	◆	◆	◆	◆	◆	◆	◆	◆	◆	◆	◆
200			◆	◆	◆	◆	◆	◆	◆	◆	◆	◆	◆	◆
220			◆	◆	◆	◆	◆	◆	◆	◆	◆	◆	◆	◆
230				◆	◆	◆	◆	◆	◆	◆	◆	◆	◆	◆

Socket Head Cap Screws (Metric) continued

Length	M3	M4	M5	M6	M8	M10	M12	M14	M16	M20	M24	M27	M30	M36
240					◆	◆	◆		◆	◆	◆	◆	◆	◆
250					◆	◆	◆		◆	◆	◆	◆	◆	◆
260							◆		◆	◆	◆	◆	◆	◆
280									◆	◆	◆	◆	◆	◆
300					◆	◆	◆		◆	◆	◆	◆	◆	◆
320									◆	◆	◆	◆	◆	◆
330											◆			
340									◆	◆	◆		◆	◆
350						◆			◆		◆			
360													◆	◆
380													◆	◆
400											◆		◆	◆
420													◆	
460														◆
480														◆
500														◆
520														◆
540										◆				
560														◆
580														◆

Socket Head Cap Screws (Imperial)



BSW cap screws stocked

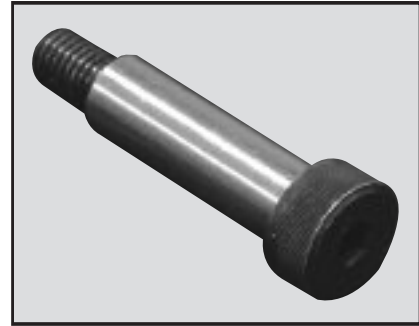
Some sizes available in Threads: UNC, UNF, BSF

Sizes: 7/16, 7/8, 1 1/4, 1 1/2 also available

Length	1/8	3/16	1/4	5/16	3/8	1/2	5/8	3/4	1"
3/8	◆	◆	◆						
1/2	◆	◆	◆	◆	◆				
5/8		◆	◆	◆	◆				
3/4	◆	◆	◆	◆	◆	◆			
7/8			◆	◆	◆				
1	◆	◆	◆	◆	◆	◆	◆		
1 1/4		◆	◆	◆	◆	◆	◆	◆	
1 1/2		◆	◆	◆	◆	◆	◆	◆	
1 3/4		◆	◆	◆	◆	◆	◆	◆	
2		◆	◆	◆	◆	◆	◆	◆	◆
2 1/4				◆	◆	◆	◆	◆	◆
2 1/2			◆	◆	◆	◆	◆	◆	◆
2 3/4				◆	◆	◆	◆	◆	◆
3			◆	◆	◆	◆	◆	◆	◆
3 1/4				◆	◆	◆	◆	◆	◆
3 1/2			◆	◆	◆	◆	◆	◆	◆
4			◆	◆	◆	◆	◆	◆	◆
4 1/2				◆	◆	◆	◆	◆	
5					◆	◆	◆	◆	◆
5 1/2						◆	◆		
6					◆	◆	◆	◆	◆
6 1/2						◆	◆		
7						◆	◆	◆	◆
8							◆		
9									
10									

Socket Shoulder Screw (Metric)

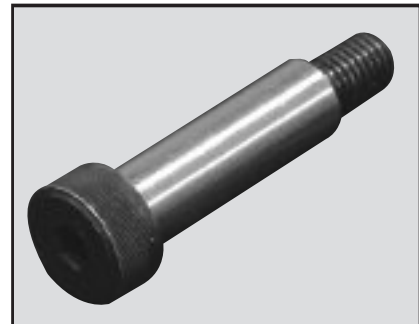
Replaces costly special parts, shafts, pivots, pins and guides



Length	6mm M5	8mm M6	10mm M8	12mm M10	16mm M12	20mm M16	24mm M20	Shoulder Diameter Thread
10	◆	◆	◆					
12	◆	◆	◆	◆				
16	◆	◆	◆	◆				
20	◆	◆	◆	◆	◆			
25	◆	◆	◆	◆	◆			
30	◆	◆	◆	◆	◆			
40	◆	◆	◆	◆	◆	◆		
50	◆	◆	◆	◆	◆	◆	◆	
60	◆	◆	◆	◆	◆	◆	◆	
70	◆	◆	◆	◆	◆	◆	◆	
80	◆	◆	◆	◆	◆	◆	◆	
90		◆	◆	◆	◆	◆	◆	
100		◆	◆	◆	◆	◆	◆	
110			◆	◆	◆			
120				◆	◆	◆	◆	
130				◆	◆			
140				◆	◆			
150				◆	◆			

Socket Shoulder Screw (Imperial)

Replaces costly special parts, shafts, pivots, pins and guides



Length	1/4	5/16	3/8	1/2	5/8	3/4	Shoulder Diameter "Thread BSW,UNC"
3/8	◆	◆	◆				
1/2	◆	◆	◆	◆			
5/8	◆	◆	◆	◆			
3/4	◆	◆	◆	◆			
1	◆	◆	◆	◆			
1 1/4	◆	◆	◆	◆	◆		
1 1/2	◆	◆	◆	◆	◆	◆	
1 3/4		◆	◆	◆	◆	◆	
2	◆	◆	◆	◆	◆	◆	
2 1/4		◆	◆	◆	◆	◆	
2 1/2		◆	◆	◆	◆	◆	
2 3/4			◆	◆	◆	◆	
3			◆	◆	◆	◆	
3 1/2			◆	◆	◆	◆	
4			◆	◆	◆	◆	
4 1/2				◆	◆	◆	
5					◆	◆	

Socket Set Screw (Metric)

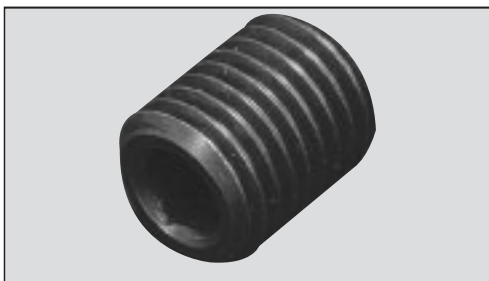


Knurled cup point

“dog, flat and cone point also available”

Length	M1.6	M2	M2.5	M3	M4	M5	M6	M8	M10	M12	M16	M20	M24	Thread
3	◆	◆	◆	◆	◆									
4	◆	◆	◆	◆	◆									
5	◆	◆	◆	◆	◆	◆								
6		◆	◆	◆	◆	◆	◆							
8		◆	◆	◆	◆	◆	◆	◆						
10			◆	◆	◆	◆	◆	◆	◆					
12				◆	◆	◆	◆	◆	◆	◆				
16				◆	◆	◆	◆	◆	◆	◆	◆			
20					◆	◆	◆	◆	◆	◆	◆	◆		
25						◆	◆	◆	◆	◆	◆	◆	◆	
30						◆	◆	◆	◆	◆	◆	◆	◆	◆
35							◆	◆	◆	◆	◆	◆	◆	◆
40							◆	◆	◆	◆	◆	◆	◆	◆
45							◆	◆	◆	◆	◆	◆	◆	◆
50							◆	◆	◆	◆	◆	◆	◆	◆
60										◆	◆	◆	◆	◆

Socket Set Screw (Imperial)



Knurled cup point

Length	1/8	3/16	1/4	5/16	3/8	1/2	5/8	3/4	1	BSW & UNC Thread
1/8	◆									
3/16	◆	◆								
1/4	◆	◆	◆	◆						
5/16		◆	◆	◆	◆					
3/8		◆	◆	◆	◆					
1/2	◆	◆	◆	◆	◆	◆				
5/8		◆	◆	◆	◆	◆	◆			
3/4		◆	◆	◆	◆	◆	◆	◆		
1		◆	◆	◆	◆	◆	◆	◆	◆	
1 1/4						◆	◆	◆	◆	
1 1/2			◆	◆	◆	◆	◆	◆	◆	
2					◆	◆	◆	◆	◆	
2 1/2								◆	◆	
3								◆	◆	

Socket Head Countersunk Screws (Metric)

Controlled angle under head ensures maximum flushness and side wall contact, Non-slip hex socket provides positive drive without damage to material, also available in zinc coated



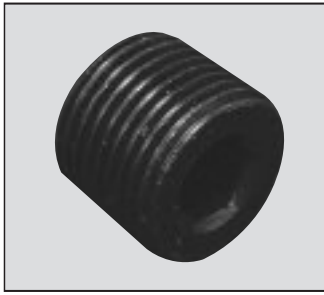
Length	M3	M4	M5	M6	M8	M10	M12	M16	M20	M24
6	◆									
8	◆	◆	◆	◆						
10	◆	◆	◆	◆	◆					
12	◆	◆	◆	◆	◆	◆				
16	◆	◆	◆	◆	◆	◆	◆			
20	◆	◆	◆	◆	◆	◆	◆			
25	◆	◆	◆	◆	◆	◆	◆			
30	◆	◆	◆	◆	◆	◆	◆	◆		
35		◆	◆	◆	◆	◆	◆	◆	◆	
40		◆	◆	◆	◆	◆	◆	◆	◆	
45			◆	◆	◆	◆	◆	◆	◆	
50			◆	◆	◆	◆	◆	◆	◆	
55					◆	◆	◆	◆	◆	
60					◆	◆	◆	◆	◆	◆
70					◆	◆	◆	◆	◆	◆
80						◆	◆	◆	◆	◆
90						◆	◆	◆	◆	◆
100						◆	◆	◆	◆	◆
120								◆	◆	◆
140								◆	◆	◆
160								◆		◆
180										◆

Socket Head Countersunk Screws (Imperial)

Length	3/16	1/4	5/16	3/8	1/2	5/8	3/4
3/8	◆	◆					
1/2	◆	◆	◆	◆			
5/8	◆	◆	◆	◆			
3/4	◆	◆	◆	◆	◆		
1	◆	◆	◆	◆	◆		
1 1/4	◆	◆	◆	◆	◆	◆	
1 1/2	◆	◆	◆	◆	◆	◆	◆
1 3/4		◆	◆	◆	◆	◆	◆
2		◆	◆	◆	◆	◆	◆
2 1/2		◆	◆	◆	◆	◆	◆
3				◆	◆	◆	◆
3 1/2						◆	◆
4						◆	◆



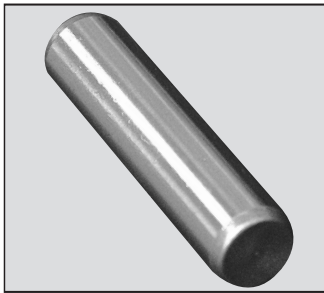
BSPT Pressure Plugs



Thread Size
1/8
1/4
3/8
1/2
5/8
3/4
1
1 1/4
1 1/2

Also available in NPTF
Metric ISO

Standard Dowel Pins (Metric)



"Precision Ground and Hardened Dowel Pins, Standard for die work, also used as bearings, gauges and precision parts. Formed ends and controlled heat treatment prevent chipping. Close tolerances."

Additional sizes
available upon
request.

Length	M3	M4	M5	M6	M8	M10	M12	M13	M16	M20	M25	Dia
10	◆	◆										
12	◆	◆	◆									
16	◆	◆	◆	◆	◆							
18	◆	◆	◆	◆	◆							
20	◆	◆	◆	◆	◆	◆						
25	◆	◆	◆	◆	◆	◆	◆					
30	◆	◆	◆	◆	◆	◆	◆					
35		◆	◆	◆	◆		◆					
40		◆	◆	◆	◆	◆	◆		◆			
50		◆	◆	◆	◆	◆	◆	◆	◆	◆		
60				◆	◆	◆	◆	◆	◆	◆	◆	
65					◆							
70					◆	◆	◆		◆			
80						◆	◆		◆	◆		
90									◆			
100						◆	◆		◆	◆		
120									◆	◆		

Standard Dowel Pins (Imperial)



Length	1/8	3/16	1/4	5/16	3/8	1/2	Dia
3/8	◆						
1/2	◆	◆	◆	◆	◆		
5/8	◆	◆					
3/4	◆	◆	◆	◆	◆	◆	
1	◆	◆	◆	◆	◆	◆	
1 1/4	◆	◆	◆	◆	◆	◆	
1 1/2	◆	◆	◆	◆	◆	◆	
1 3/4	◆		◆		◆	◆	
2	◆	◆	◆	◆	◆	◆	
2 1/4				◆	◆	◆	
2 1/2			◆	◆	◆	◆	
3				◆	◆	◆	
3 1/2						◆	
4						◆	

Tapped Dowel Pins (Metric)

Length mm	6mm M4	8mm M5	10mm M5	12mm M6	13mm M8	16mm M8	20mm M10	Dia Internal Thread
20	◆	◆						
25	◆	◆	◆					
30	◆	◆	◆					
35	◆	◆	◆	◆				
40	◆	◆	◆	◆	◆	◆		
50	◆	◆	◆	◆	◆	◆	◆	
60		◆	◆	◆	◆	◆	◆	
65								
70			◆	◆	◆	◆		
80			◆	◆	◆	◆	◆	
90						◆		
100				◆	◆	◆	◆	
120						◆	◆	

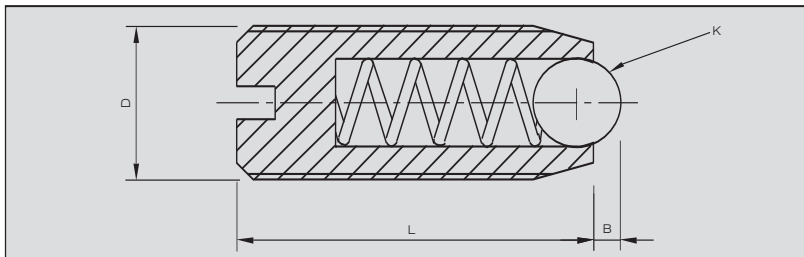
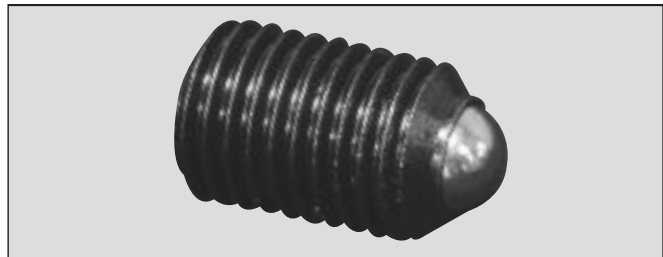


“25mm also available upon request”

Tapped Imperial dowel pins are available upon request

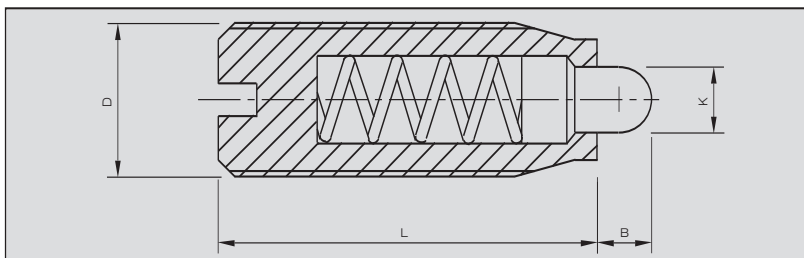
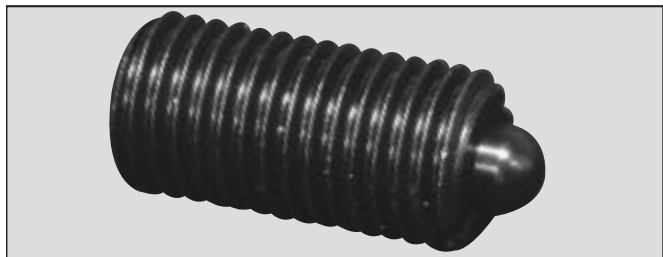
Ball Catches

Part Number RAM			
D	K	L	B
M6	3.5	14	1.2
M8	5	16	1.8
M10	6	19	2.2
M12	8	22	2.8
M16	10	24	3.4

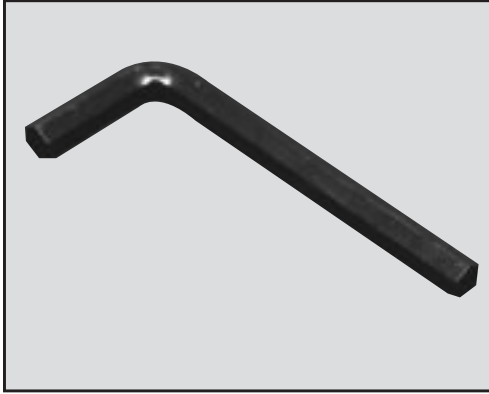


Pin Plungers

Part Number RBM			
D	K	L	B
M6	2.7	20	2.5
M8	3.5	22	2.5
M10	4	22	2.5
M12	6	28	3.5
M16	7.5	32	4.5



Hexagon Wrench (Allen Keys)



A/F MM Short Arm	Metric		Imperial	
	A/F MM Short Arm		Short Arm	Long arm
1.5	1.5		1/16	1/16
2	2		5/64	5/64
2.5	2.5		3/32	3/32
3	3		7/64	7/64
4	4		1/8	1/8
5	5		9/64	9/64
6	6		5/32	5/32
8	8		3/16	3/16
10	10		7/32	7/32
12	12		1/4	1/4
14	14		5/16	5/16
17	17		3/8	3/8
19	19		7/16	7/16
22			1/2	1/2
24			9/16	9/16
27			5/8	5/8
32			3/4	3/4
			7/8	7/8
			1	1

Allen Key Sets



Part Number	Description
UMFKM	Metric long arm 9pce (plastic moulded case)
UMSM	Metric short arm 10 pc (Plastic Wallet)
UMFKI	Imperial long arm 13pc (Plastic moulded case)
UMSI	Imperial short arm 10pc (plastic wallet)
UMFBI	Imperial Ballnose Long Series 13 pc
UMFBM	Metric Ballnose Long Series 9 pc

* Note straight & ballnose available