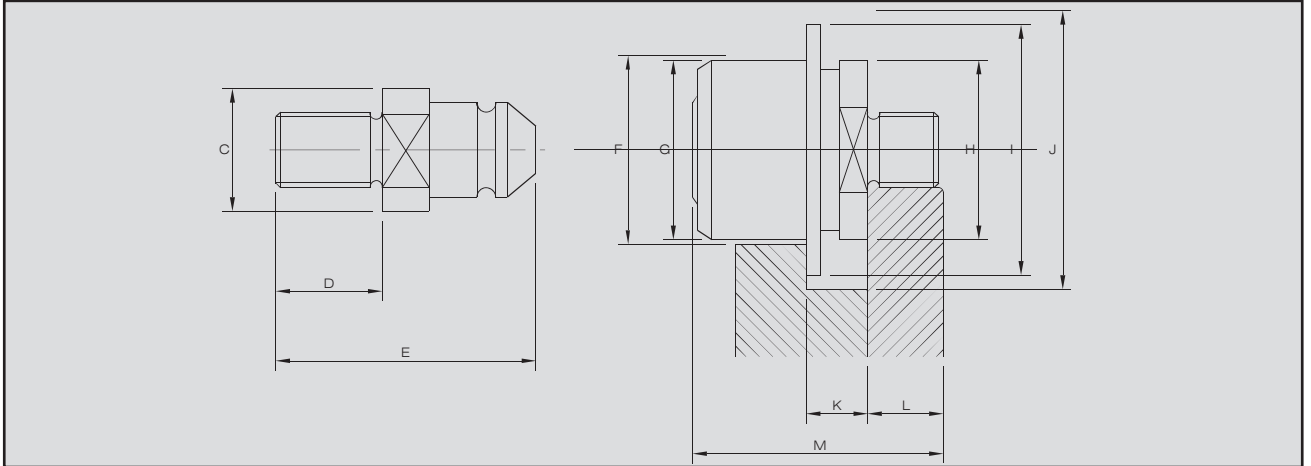


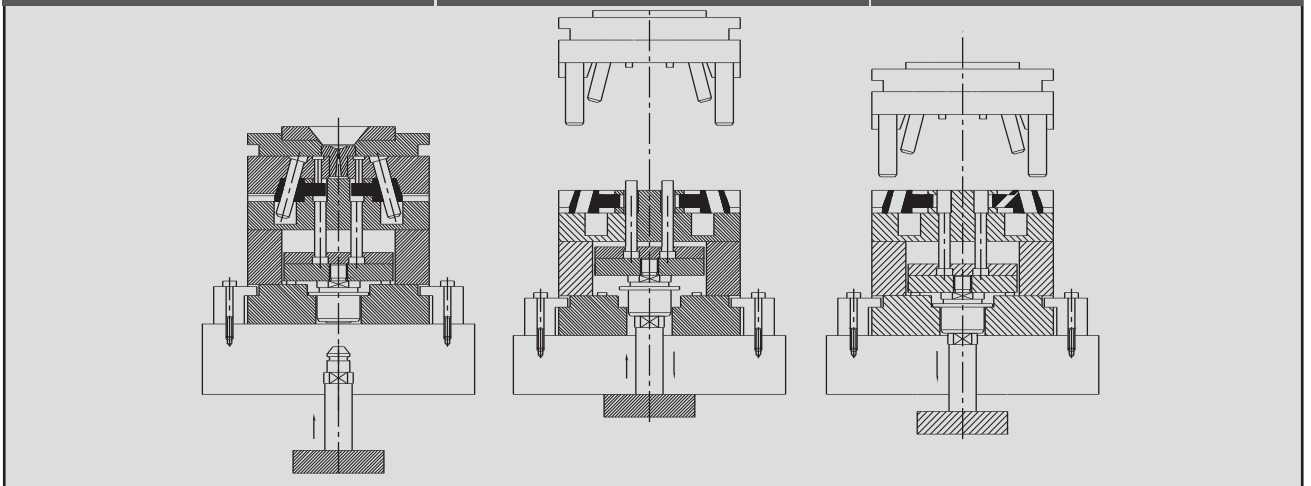
Ejector Couplers



Mould Closed-Material Injected

Mould Open-Coupler Engages and Pushes Forward

Coupler and Bars Pull Back the Ejector Plate

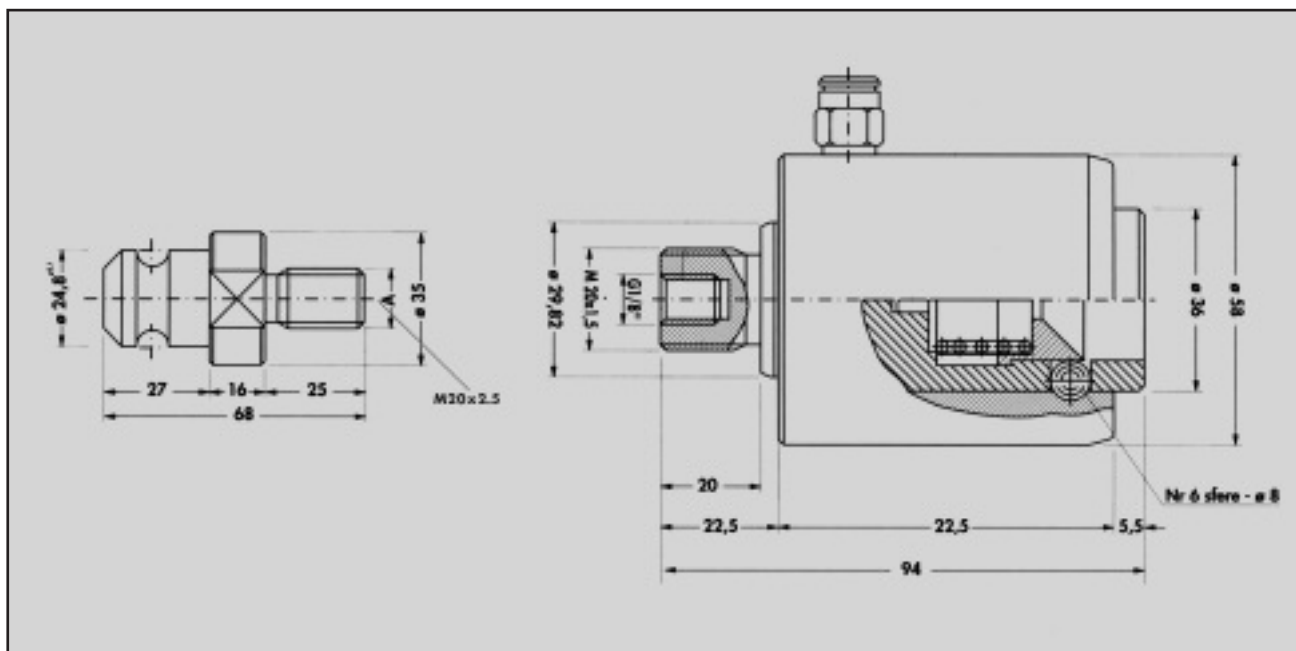


COUPLER									
Code	Thread	F	G	H	I	J	K	L	M
302M12COUP	12X1.75	34	32	32	39	43	9	15	42.5
402M16COUP	16X1.5	40	38	38	48	53	13	15	52
402M162COUP	16X2	40	38	38	48	53	13	15	52
402M20COUP	20X1.5	40	38	38	48	53	13	15	52
412M16COUP	16X1.5	58	56	52	65	70	17	18	68

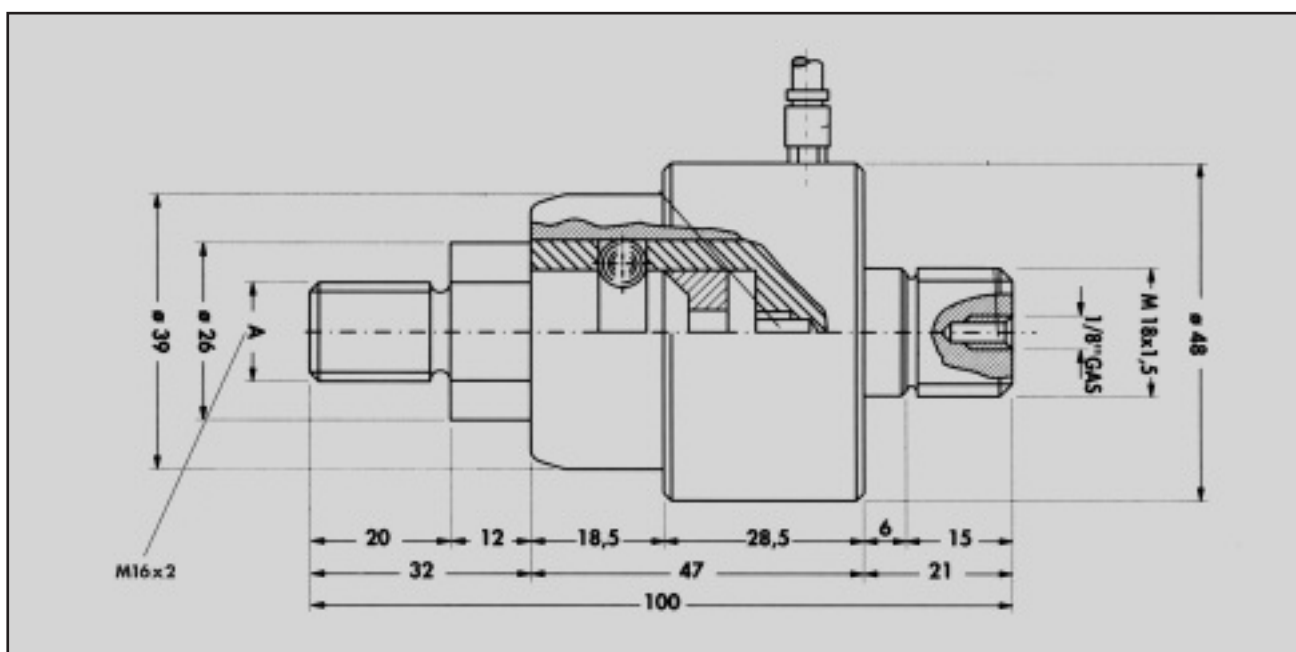
BARBS				
Code	Thread	C	D	E
301M12Barb	12x1.75	22.8	20	45.5
401M16Barb	16x2	25.8	20	55
401M20Barb	20x2.5	25.8	20	55
411M16Barb	16x2	35	35	68

Air Ejector Couplers

Large Coupler: OKA20



Standard Coupler: OKAC18

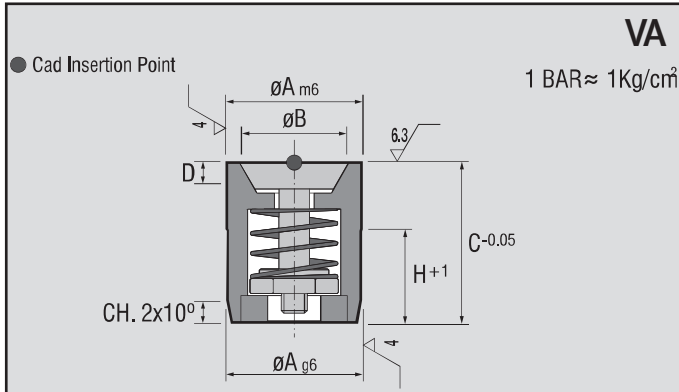


Air Poppets



Mat.: INOX. 1.4034
Hardened 51 ± 3 HRC. Working pressure 1.5-6 BARS.

Helps part ejection with air. Wide range of diameters. Offers a standard solution to the moulder.



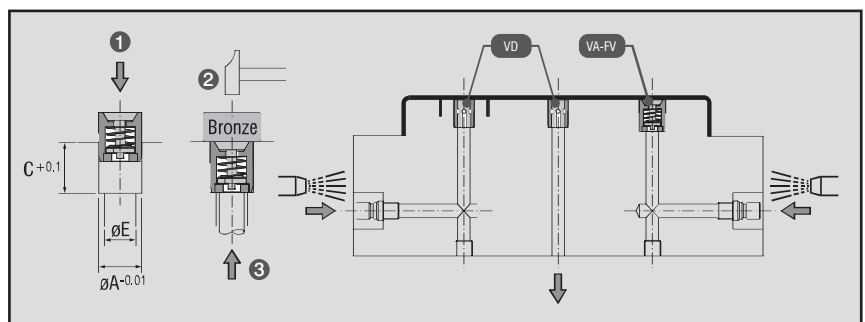
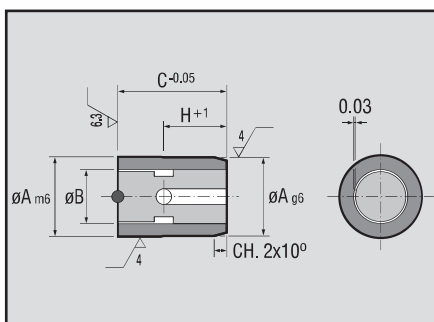
Standard Air Poppets

Ref.	A	B	C	D	E	H
VA.050412	5	3	12	1.5	4	7
VA.065212	6	5.2	12	1.5	4	7
VA.086512	8	6.5	12	1.5	4	7
VA.100812	10	8	12	2	8	7
VA.121012	12	10	12	2.5	10	7
VA.161320	16	13	20	3	12	12
VA.201720	20	17	20	3.5	16	12

Double Valve



Ref.	A	B	C	E	H
VD.080512	8	5	12	4	7
VD.100612	10	6	12	5	7
VD.120812	12	8	12	7	7
VD.161020	16	10	20	9	12



Counter Views

Progressive Counter Views positively mould usage by tracking activity for the life of the tool. Three mounting styles are available for easy installation of the Counter View.

Material: Glass-Filled Nylon Housing

Maximum Operating Temperature is 250 F (120 C)

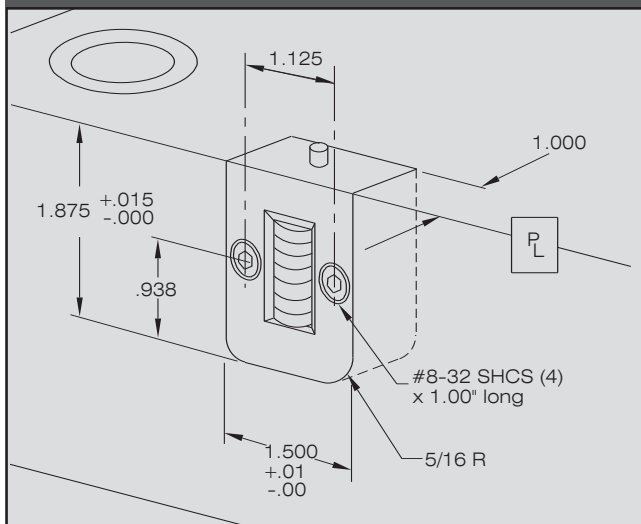
Counter: Non-Resettable Mechanical, 7 Digit

US Patent Number 5,571,539, Others Pending.



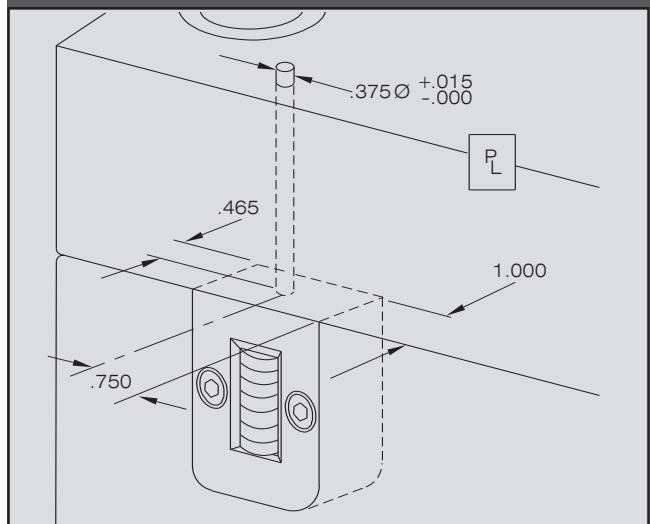
100 Series

Parting Line Mount CVPL-100



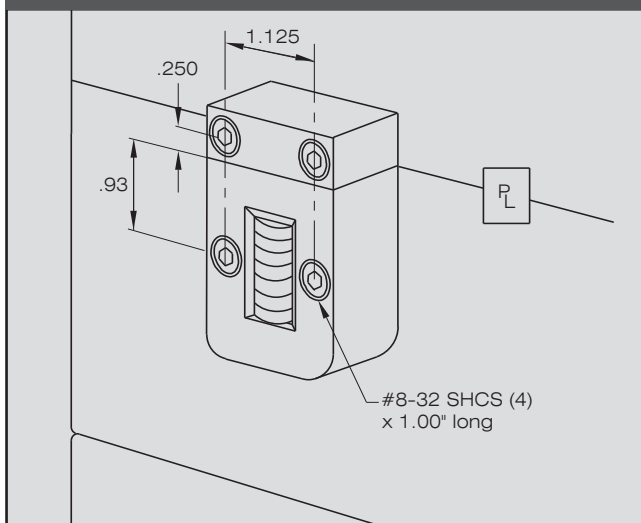
Parting the mount makes the unit visible to the operator.

Internal Extension Mount CVIN-100



The machinable 8" extension allows for mounting in the support plate or rails.

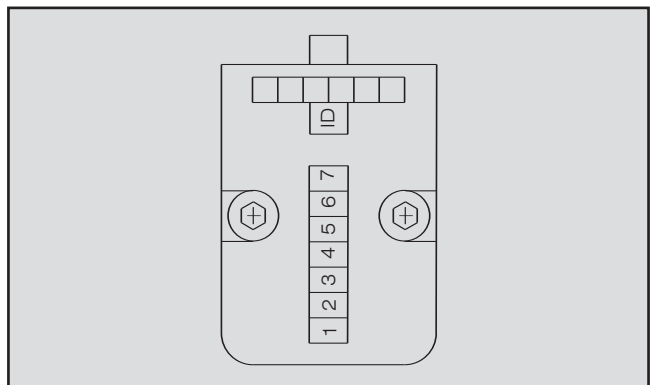
External Mount CVEX-100 CVEX 200 Metric



No pocket machining necessary; designed specifically for retrofit applications.

Installation Guidelines

Front ID plate may be stamped for easy tool identification prior to attachment onto Counter View housing. Machine pocket, threads, and extension clearance hole as shown. Attach Counter View with screws, ensuring that housing seats firmly into pocket, with the acuator parallel to the parting line.



THINSWITCH® Limit Switch



General Description

Smartflow® Thinswitch® Limit Switch is designed to verify ejector plate return before permitting the mold to close in injection molding machines. This small switch is thin enough to fit inside the ejector housing. It can also be used for core slides, or any place space is limited.

The Thinswitch® Limit Switch has been tested for reliability over 10 million cycles without failure. Two switches can be used in series for larger molds to ensure the ejector plate return, preventing costly mold damage.

Features and Benefits

- **Over 10 million cycle life** provides long dependable service.
- **175°F (79.4°C) standard temperature rating** allows installation into most molding applications.
- **250°F (121°C) high temperature unit** is available for higher temperature needs.
- **Adjustable operating point** allows actuation between .187" and .250" from the base.
- **In stock** to provide same day delivery in most cases.
- **3/16" thick** design fits snugly behind the ejector plate in the space provided by the rest buttons.
- **Stripped and tinned 6 ft. wire leads** make the switch ready to install without modification.

Specifications

Electrical

250VAC.....	5 Amps resistive
	4 Amps inductive
28VDC (sea level).....	5 Amps resistive
	4 Amps inductive

Operating Temperature

T-222-LR Standard Model.....	175°F max.
	(79.4°C max.)
HT-291-LR High Temp Model.....	250°F max.
	(121°C max.)
Switching.....	SPDT

Rated Current vs. Steel Temperature					
T-222-LR			HT-291-LR		
Amps	°F	°C	Amps	°F	°C
5.0	85	29.4	5.0	100	37.7
4.0	120	49.0	4.5	155	68.3
3.0	155	68.3	4.0	210	98.8
2.0	175	79.4	3.5	250	121.1

The Thinswitch® Limit Switch is designed for use in very low power mold protection control circuits. It is not intended to switch heavy loads in power applications.

Materials

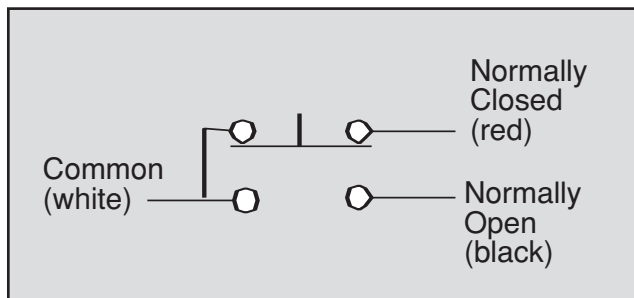
Body.....	Fibreglass-reinforced nylon
Dome.....	Polyurethane
Back Cover.....	Polyester film
Wire Leads.....	22ga stranded, 3-conductor, shielded cable, 6 ft. (1.8m) long, ends stripped and tinned

THINSWITCH® Limit Switch

THINSWITCH® Limit Switches are in stock and ready for same day shipment.

Housing	Temperature Rating
Standard	
T-222	Standard 175°F / 79.4°C maximum
HT-291	High Temperature 250°F / 121°C maximum

Wiring Diagram

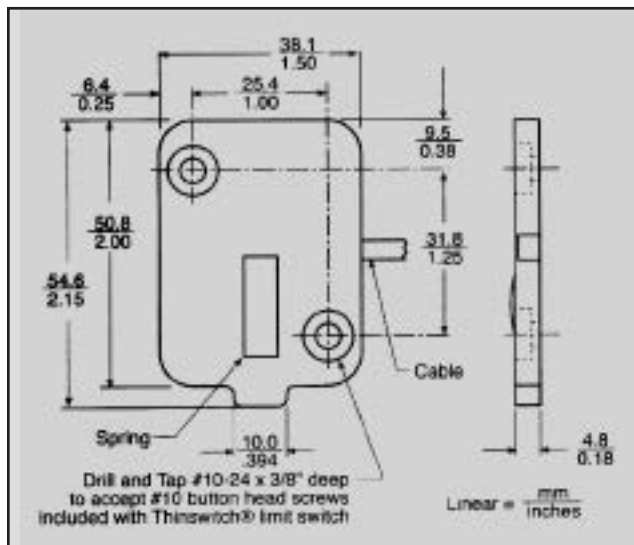


Parts Included

- 1 Thinswitch Limit Switch
- 1 Allen wrench (for height adjustment)
- 4 #10-24 button head screws
- 2 Wire Clamps
- 1 Instruction sheet

Dimensions

Standard Housing



Hopper Magnets



Model	L (mm)	W (mm)	H (mm)	Type
5" Round	120	112	90	Round Type - 5 Bars
5" Square	120	112	90	Square Type - 5 Bars
7" Round	180	175	75	Round Type - 7 Bars
7" Square	180	175	75	Square Type - 7 Bars
8" Round	185	163	32	Round Type - 4 Bars
9" Round	230	218	75	Round Type - 9 Bars
9" Square	230	218	75	Square Type - 9 Bars
11" Round	265	262	75	Round Type - 11 Bars

Water Flow Meter



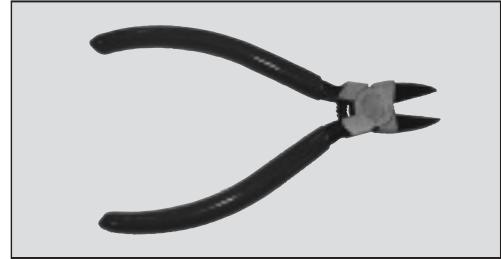
Part Number	Description
FSML400	8 Litres per minute. Each zone sold separately

Sprue Snips

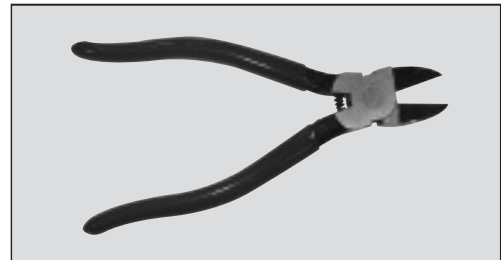
Part No	Description	Specifications
MCTS125	125mm Model	Length Overall 130mm Blade Length 19mm Usable Blade Opening at Tip 13.5mm Usable Blade Opening at Base 5.5mm



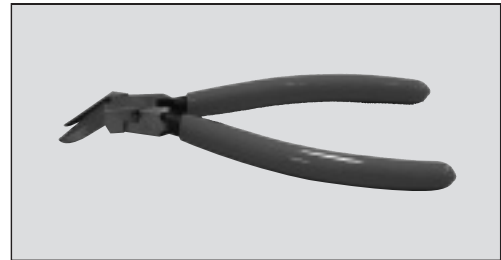
Part No	Description	Specifications
MCTS150	150mm Model	Length Overall 155mm Blade Length 21mm Usable Blade Opening at Tip 16mm Usable Blade Opening at Base 6mm



Part No	Description	Specifications
MCTS180	180mm Model	Length Overall 185mm Blade Length 25mm Spring Type Coil

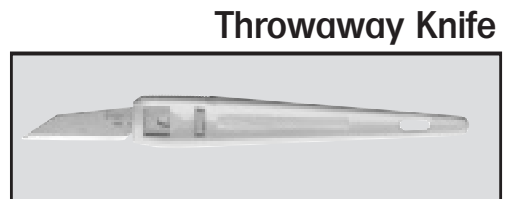


Part No	Description	Specifications
MC160S	Flat Back	Japanese quality snips
MC170S	Angled Back	Japanese quality snips



Knives

Part Number	Description
TSK	145mm Long Disposable Fixed Knife Blade

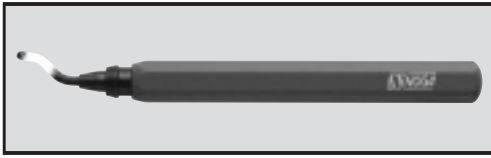


Part Number	Description
WF620 (Small) WF1540 (Large)	Small and large Work Finishers offer deburring of hard plastics, without the possibility of cutting your hand.



Deburring Tools

Rapid Burr



Part Number	Description
NRB1000	Holds "S10" blades, easily replaced by pushing back sleeve.

Teddy Burr



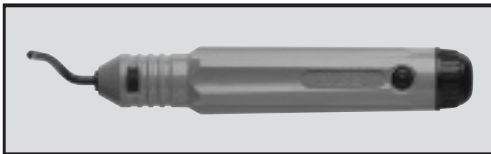
Part Number	Description
NTB1000	Holds all "N" blades, easy to replace Comes with handy pocket clip.

Edge-Off Plastic



Part Number	Description
NEO1000	Light duty plastic handle with non-replaceable S10 blades.

Noga Burr 5



Part Number	Description
NB5000	Suitable for coarse to extra fine deburring, takes all "S" blades.

Liza Burr



Part Number	Description
NLB1000	UN1000 Handle, SN-Holder. N1 & N2 blades with extension arm.

S10 Blade

Part Number	Description
S10	Light duty for steel, aluminium and plastic.

B10-Plastic

Part Number	Description
BN1410	Specially ground for deburring plastics.

N1 Blade

Part Number	Description
NBN1010	Light duty for steel, aluminium and plastic.